

# WOOL & FINE FIBER BOOK

*tactile perspectives  
from our land*



# CONTENTS

## WOOL & FINE FIBER BOOK / PART ONE

### INTRODUCTORY PAGES:

- Why would you use this book? & Who might use this book?
- How might you use this book? & Examples of Blending
- Natural Dyes ~ Creating Another Layer
- Annual Production, Quantity, Color, and Price List
- Acknowledgements

### PRODUCER PAGES:

**Alexis & Gillies Robertson**  
Skyelark Ranch  
Brooks, CA

**Amanda, Ed & Gabrielle Mann**  
Mann Family Farm  
Bolinas, CA

**Ariana & Casey Mazzucchi**  
Casari Ranch  
Point Arena, CA

**Audrey Adams**  
Tombstone Livestock  
Sanger, CA

**Barbara & Ron Fiorica**  
Caprette Cashmere  
& Love Spun Homespun  
Wilton, CA

**Beverly Fleming**  
Ewe & Me 2 Ranch  
Cotati, CA

**Bodega Pastures**  
Bodega, CA

**Carrie Sparrevohn  
& John Ham**  
Kirabo Pastures  
Upper Lake, CA

**Catherine Lawson**  
Blue Barn Farm  
El Dorado, CA

**Dan Macon**  
Flying Mule Farm  
Auburn, CA

**Dana Foss**  
Royal Fibers  
Dixon, CA

**Deb Galway**  
Menagerie Hill Ranch  
Vacaville, CA

**Dru Rivers**  
Full Belly Farm  
Guinda, CA

**Erin Maclean**  
Bungalow Farm Angora  
Sacramento, CA

**Hopland Research  
and Extension Center**  
Hopland, CA

**Janet Hepler**  
Nebo-Rock Ranch  
& Textiles  
Covelo, CA

**Jean Near**  
Utopia Ranch  
Redwood Valley, CA

**Jim Jensen**  
Jensen Ranch  
Tomaes, CA

## WOOL & FINE FIBER BOOK / PART TWO

**Julie & Ken Rosenfeld**  
Renaissance Ridge Alpacas  
Mount Aukum, CA

**Katie & Sascha Grutter**  
GC Icelandics  
Palermo, CA

**Kelli Dunaj**  
Spring Coyote Ranch  
Marshall, CA

**Kim Bethel**  
Downhome  
Handspun Fibers  
North Fork, CA

**Lani Estill**  
Estill Ranches, LLC  
& Lani's Lana  
Eagleville, CA

**Leslie Adkins**  
Heart Felt Fiber Farm  
Santa Rosa, CA

**Lynn & Jim Moody**  
Blue Oak Canyon Ranch  
San Miguel, CA

**Marcia Barinaga**  
Barinaga Ranch  
Marshall, CA

**Marie Hoff**  
Capella Grazing Project  
Bodega, CA

**Marlie de Swart**  
Bo-Rage Yarns & Designs  
Bolinas, CA

**Marnie Jackson**  
Black Mountain Farm  
Nicasio, CA

**Mary Pettis-Sarley**  
Twirl Yarn  
Napa, CA

**Maureen Macedo**  
Macedo's Mini Acre  
Turlock, CA

**Nancy Fleenor Thompson**  
Tolenas Mohair Farm  
Fairfield, CA

**Peggy Agnew**  
Red Creek Farm  
Potter Valley, CA

**Robin Lynde**  
Meridian Jacobs  
Vacaville, CA

**Sally Fox**  
Viriditas Farm  
Brooks, CA

**Sandra Charlton**  
Sheepie Dreams Organics  
Santa Cruz, CA

**Sandy Wallace**  
Alpacas of Marin  
Nicasio, CA

**Sarah Keiser**  
Wild Oat Hollow  
Penngrove, CA

**Susan Timm**  
Timm Ranch  
Vacaville, CA

## Why Would You Use This Book?

**This book is designed to foster relationships between farmers & ranchers** and those that use their fiber, including hand-spinners, knitters, designers and brands. It is less a document to ‘place a yarn order from’—instead it illuminates what is growing in our own communities and it stands as an invitation for you to make that call or email to those producers whose material and story you find yourself drawn to.

Directly supporting local fiber farmers and ranchers is good for our overall community health in these three basic ways:

- 1) Together we are ensuring continued access to local fiber and food supplies and the skilled land-based jobs associated with their production
- 2) We increase on-farm income and directly protect lands from being sold and developed. (For example, 40,000 acres of agricultural land is paved over in California each year.)
- 3) When we create what we need from local landscapes we are drastically lowering travel miles of imported goods and the associated greenhouse gas pollution; simultaneously we retain local landscapes for biological diversity.

We’ve already begun to see improvements to both the fiber quality and the local textile creation processes in our region due to the increased occurrence of designers communicating and building relationships with those on the land. This book is an invitation to continue to refine our collective creation processes.

When we pave over living soils that exist as the foundation of our ranches, farms, gardens and open spaces, we cut off the soil’s ability to sequester and cycle carbon. Ameliorating the climate crisis is contingent on both protecting our existing soils, as well as improving our land management to enhance the soil’s ability to cycle and hold permanent forms of carbon.

The fiber producers illuminated in this book are part of our regional Soil-to-Soil System. What grows from these lands can be returned via composting. All of these materials come from and return to the earth—and thus exist in harmony with the carbon cycle. We admonish those of you who choose to work with these producers to tell the story of local natural fiber and its connection to carbon and climate. The work to regionalize and regenerate fiber systems is a team effort—we invite your participation as an individual artisan, design house or brand. We are grateful for your creativity and look forward to see how you interpret the language of the land in the garments and goods you produce with these materials.

## Who Might Use This Book?

**Hand-spinners:** You could choose your own fleece at shearing time (direct from the farm), or you can purchase washed and carded roving from many of the producers listed in this book.

**Knitters:** Many producers offer their own yarns direct from the farm or ranch. You can search for producers who have mill-spun yarns on their product page. Yarn batches will vary in gauge and quantity year to year. Prices also change, contact the farm directly for details.

**Designers & Brands:** If you operate a small business or work for a large brand, this book will allow you to maximize the one-of-a-kind nature of your pieces, and provide you an opportunity to tell a unique story about soil-to-soil textile systems. Fibershed will be issuing a *National Mill Inventory* mid-way through 2016 (with domestic recommendations from scouring to sewing), which will support you in finding a mill that can help you create your own blends of yarn. In the meantime, if you need a mill to work with or have questions about how to process your fibers, feel free to contact us at [office@fibershed.com](mailto:office@fibershed.com).

**Climate Beneficial:** One of the largest producers in this book is now producing certified ‘Climate Beneficial Wool,’ meaning they’ve started large-scale compost operations and have designed an entire carbon farm plan that includes windbreaks and creek side restoration. If you have questions about Climate Beneficial fiber, feel free to contact our non-profit for more details by emailing [office@fibershed.com](mailto:office@fibershed.com).

**Pricing:** Fibers in this book range in price from \$1.90 per pound to \$4 per ounce. The *Annual Production Quantities & Colors* page at the back of this book lists pounds of fiber produced per year. Large-scale producers tend to have lower pricing than small-scale producers.

## How Might You Use This Book?

**One way to use this book** is to blend fibers from several producers to create your own unique yarn. Considering what kind of textile you are making is the first step in choosing your fibers. High micron count fibers are perfect for creating hearty long lasting outerwear and durable goods. Fine micron count fibers can be used for goods that are next to sensitive parts of the skin, like the neck or wrists.

Different animal fibers carry different properties:

- ~ **Alpaca** is known to enhance drape (it has no crimp); many alpaca producers in this book have herds with a diversity of colors and generally very fine fiber.
- ~ **Wool** has crimp (less drape), and there is much variety between the breeds, each genetic type offering different virtues. We recommend *The Field Guide to Fleece* by Deborah Robson and Carol Ekarius for more on fiber qualities of various breeds.
- ~ **Mohair** (from angora goats) is known to enhance luster. It can shine and reflect light like silk, and is also a very fine fiber.
- ~ **Angora** (from rabbits) is known to be one of the warmest and softest fibers available. It tends to be in shorter supply, thus it makes an excellent addition to a yarn blend at a low percentage.

**Purchasing existing yarn** from a farmer is another way to use this book, however gauges of yarn will vary year to year. It is best to contact the producers directly to get details regarding gauge, color and quantity.

## Examples of Blending

**Mary Pettis Sarley's Twirl Blends**  
(Mill spun blend of wool, mohair and alpaca)



**Marnie Jackson's Handspun**  
(Handspun blend – one strand of angora plied with one strand of wool)





## Natural Dyes ~ Creating Another Layer

This book shows the natural color of the fiber as provided by the animals themselves.

Below are examples of how very different fibers take natural dyes. (We are showing native California plants as dyes here.)

There are many natural dye books that provide great instruction on their use, and if you are looking for natural dye stuffs there are purveyors who sell extracts online. We 100% recommend biosphere based color (from plants) for your dyeing practice. (Synthetic dyes are derived from fossil carbon and heavy metals.)

**Kim Bethel's 100% White Mohair**  
Dyed in Toyon

**Kim Bethel's 100% Gray Mohair**  
Dyed in Toyon

(This is a luster rich fiber—note the variation of gray and white fiber using the same natural dye plant.)



**Jean Near's 100% Merino**  
Dyed in Toyon

**Jean Near's 100% Merino**  
Dyed in Coyote Brush

(Merino has little luster—it is more well known for having very good crimp.)



## Annual Production, Quantity, Color and Price List

Contact producer to confirm all details — prices and quantities vary year to year with environmental effects.

PRODUCER	BREEDS, COLORS & ANNUAL QUANTITIES	PRICE FOR MATERIALS
<b>Alexis &amp; Gillies Robertson</b> Skyelark Ranch farmhouse@skyelarkranch.com	<i>Processed fiber:</i> California Red (90 lbs)  <i>Color:</i> cream	<i>Wholesale:</i> Worsted weight double-ply yarn, Single-ply bulky yarn: \$12/skein
		<i>Retail:</i> Worsted weight double-ply yarn, Single-ply bulky yarn: \$16/skein  Roving: \$16/ball, 4 oz  Batting: \$25/lb
<b>Amanda, Ed &amp; Gabrielle Mann</b> Mann Family Farm events@mannfamilyfarm.com	<i>Raw fiber:</i> Corriedale/Wensleydale cross (200 lbs)  <i>Colors:</i> white/cream, silver, black	Worsted and sport weight yarn: \$25/undyed 4-oz skein; \$30/naturally-dyed 4-oz skein  Roving: \$16/ball, 4 oz, cream or brown
		<i>Wholesale:</i> Roving: \$10/ball, 4 oz, cream or brown
<b>Ariana &amp; Casey Mazzucchi</b> Casari Ranch & Wool Mill ariana@casariranch.com 707-882-1885	<i>Raw fiber:</i> Dorset (500-1000 lbs) Romney (50 lbs) Navajo-Churro (200 lbs) Shetland (25 lbs)  <i>Colors:</i> white, cream, grays and browns	<i>Wholesale:</i> Navajo-Churro yarn: \$16.50/skein
		<i>Retail:</i> Navajo-Churro yarn: \$24/skein
<b>Audrey Adams</b> Tombstone Livestock K9S4EWE@aol.com 559-349-3208	<i>Raw fiber:</i> Shetland (150 lbs)  <i>Colors:</i> white, black, shades of brown  <i>Other fiber:</i> Pygora goat	Raw fleece (40+ fleeces currently): \$10.00/lb  Mill processed roving: \$3.00/oz (black, brown or white)  Mill spun Shetland yarn: \$13.00/skein, approx. 4 oz
<b>Barbara &amp; Ron Fiorica</b> Caprette Cashmere rbfiorica@frontiernet.net 916-687-6406	<i>Raw fiber:</i> Cashmere (5 lbs); white, light gray, brown  Angora goat (40 lbs); white, brown, black  <i>Other fiber:</i> Mohair/wool blend	Cashmere yarn: \$50/skein, 250 yards, brown, lace weight  <i>Note:</i> Inventory varies each season. Yarn runs tend to be one-of-a-kind lots.
<b>Beverly Fleming</b> Ewe & Me 2 Ranch bflamamama@yahoo.com 530-301-3154	<i>Raw fiber:</i> Romaldale and Merino for fine wool; Romney, Cotswold and crossbreds for medium and long wool (215 lbs)  Angora goat (18 lbs)  <i>Colors:</i> white, tan, brown, grays, black	Roving: \$2.50-\$3/oz, varied natural colors

PRODUCER	BREEDS, COLORS & ANNUAL QUANTITIES	PRICE FOR MATERIALS
<b>Bodega Pastures</b> pasture@sonic.net 707-327-6816 (Hazel Flett)	<i>Raw fiber:</i> Columbia, Corriedale, Romney, Suffolk & Navajo-Churro (800-1000 lbs)  <i>Colors:</i> white, gray, brown	Yarn: \$13/skein undyed white, light gray, or dark gray; in sport weight, worsted, bulky and rug (3 ply)  Roving: \$3/oz  Batting: \$12/lb
<b>Carrie Sparrevohn &amp; John Ham</b> Kirabo Pastures carrie@kirabopastures.com lmmidwife@gmail.com 707-275-9252	<i>Raw fiber:</i> Merino (150-200 lbs)  <i>Colors:</i> white, black, gray, many shades of brown	Roving: \$5 for 1 oz, \$15 for 4 oz, \$25 for 8 oz, \$40 for 16 oz  Raw fleece: prices vary
<b>Catherine Lawson</b> Blue Barn Farm catherine_lawson@sbcglobal.net 530-957-7000	<i>Raw fiber:</i> Merino (100 lbs); Cashmere (3-4 lbs), white and various shades of taupe and tan	Merino fleeces: \$17-\$19/lb for white, \$19-\$22/lb for colored; pricing depends on staple length, crimp style, lamb or adult  Merino roving, colored: 4 oz for \$12, or 1 lb for \$44  Merino roving, white: 4 oz for \$10, or 1 lb for \$37  Batts for spinning or felting: please inquire for price.
<b>Dan Macon</b> Flying Mule Farm flyingmulefarm@gmail.com	<i>Raw fiber:</i> Blueface Leicester x Cheviot (200 lbs); lambswool (50 lbs)  Blackface (Shropshire and Suffolk) (125 lbs)  Dorper (50 lbs)	Raw wool: \$1.90/lb (except Dorper, which is \$1/lb)  Free delivery up to 150 miles from Auburn for buying the entire lot. .
<b>Dana Foss</b> Royal Fibers 06foss@gmail.com 707-249-3276	<i>Processed fiber:</i> Guanaco (10-15 lbs; approx. 100 lbs in storage from past years)  <i>Raw fiber:</i> Alpaca (100 lbs)  <i>Colors:</i> white and cream, silver-gray, tan and brown (light to dark)  <i>Other breeds:</i> CVM and Karakul sheep	Roving: Adult guanaco is \$15-\$20/oz; baby guanaco is \$30/oz; royal baby guanaco (15-17 microns) can be \$30-\$40/oz  Raw fiber: \$15-\$30/oz  Handspun yarn available upon request.
		<i>Wholesale:</i> 1 pound minimum, 20% discount.
<b>Deb Galway</b> Menagerie Hill Ranch deb@menageriehillranch.com	<i>Processed fiber:</i> Huacaya alpaca roving and yarn (100 lbs)  <i>Raw fiber:</i> Huacaya alpaca fleece for hand spinners (20-30 lbs)  <i>Colors:</i> brown (light and dark), black, fawn, rose gray, white	Assorted colors, blends, grades.  Fingering yarn: \$23-\$26.25/skein, 4 oz  Sport weight yarn: \$15-\$28/skein (varying weights)  Roving: \$4.50/oz  Batts: \$27/7 oz, brown  <i>Note:</i> Prices and selection can vary each year. Custom blending and special orders upon request. 15% off roving if you buy the whole lot.



PRODUCER	BREEDS, COLORS & ANNUAL QUANTITIES	PRICE FOR MATERIALS
<b>Dru Rivers</b> Full Belly Farm produce@fullbellyfarm.com 530-796-2214	<i>Processed fiber:</i> Merino, Rambouillet, Lincoln, Suffolk (300-400 lbs, spun weight)  <i>Colors:</i> white, gray, brown and twill	Yarn: natural colored wool in 4 oz skeins: \$10/skein or \$9/skein for 10 or more skeins
<b>Erin Maclean</b> Bungalow Farm Angora angora@bungalowfarm.com	<i>Raw fiber:</i> 1-10 lbs German Angora rabbit fiber generally available; contact directly if purchasing more than 5 lbs  <i>Color:</i> white	Raw prime German angora wool: \$8/oz  Roving and batting: \$7-\$10/oz. Roving and batting are usually a 50/50 blend of German angora and Merino, Cormo or Merino/Fine Corriedale cross.  Angora pencil roving, regular roving and battings at various availability.
		<i>Wholesale:</i> Raw prime German angora wool: \$100/lb
<b>Hopland Research and Extension Center</b> Jim Lewers: jelewers@ucanr.edu 707-744-1427 ext. 110	<i>Raw fiber:</i> Targhee	Raw wool by the bale: Commodity price, check Roswell Wool for reference. Usually between \$1.25-\$1.50/lb
<b>Janet Heppler</b> Nebo-Rock Ranch & Textiles nebo-rock@saber.net 707-983-9147	<i>Raw fiber:</i> Merino (550 lbs skirted)  Angora rabbit (30 lbs)  <i>Other fiber:</i> Angora goat (mohair)  <i>Colors:</i> light gray, black, light tan to dark brown, white	Merino wool handspinner covered fleeces & raw skirted wool: prices start at \$17.00 per pound to \$30.00 per pound. Depends on fineness and color. Must buy whole fleece, average weights 6-8 lbs. Natural colors and white.  Roving: Merino, Mohair/Merino blends, and Merino/Angora rabbit, one-of-a-kind batches. Prices start at \$4.00 - \$5.50 per ounce and are based on quantity and the blend.  Merino 2-ply yarn: white, 1100 yards to the pound, 4 oz skeins milled by Mt. Meadow Wool Mill. Currently have 50 pounds. Prices are \$26.00 - \$28.00 depending on the amount ordered.  Merino/kid Mohair yarn: 50/50 blend, white, approx. 1300 yards to the pound, 4 oz skeins milled by Mt. Meadow Wool Mill. Currently have 50 pounds. Prices are \$26.00-\$28.00 depending on amount ordered.  100% Mohair 2-ply yarn: gray, 1100 yards to the pound. Currently have 30 pounds. \$30.00 per 4 oz skein.  Handspun yarn in different blends: custom orders, limited by quantity and time factor. Mohair lock yarn, 100% Angora rabbit, or Merino/rabbit. Prices are \$9.00 per oz and up.  Angora rabbit fur: \$8.50 per oz  <i>Note:</i> All prices are subject to availability and change. Some of the runs are one time only. Contact us for more information.



PRODUCER	BREEDS, COLORS & ANNUAL QUANTITIES	PRICE FOR MATERIALS
<b>Jean Near</b> Utopia Ranch jeannear1914@gmail.com	<i>Raw fiber:</i> Merino (560 lbs)  <i>Colors:</i> white, midnight black, misty gray, rich brown	Merino wool roving (quantities as of June 2016): <i>Copper</i> (tan): one 1-lb bag @ \$84 per bag <i>Duchess</i> (dark gray): four 15-oz bags @ \$78 per bag <i>Harvey</i> (black): five 1-lb bags @ \$94.55 per bag <i>Heather</i> (white): nine 1-lb bags @ \$94.80 per bag; ten 8-oz bags @ \$45 per bag <i>Raven</i> (oxford gray): four 1-lb bags @ \$84 per bag <i>Snow</i> (white): five 1-lb, 7-oz bags @ \$120 per bag; one 1-lb bag @ \$84 per bag <i>Stormy</i> (white): eight 1-lb bags @ \$84 per bag; one 1-lb, 7-oz bag @ \$120 per bag <i>Tracy</i> (oyster): three 14-oz bags @ \$74 per bag <i>Note:</i> Shipping and handling costs will be added to final price.
<b>Jim Jensen</b> Jensen Ranch jjensen@malt.org 707-888-9922	<i>Raw fiber:</i> White face Columbia/ Dorset/Suffolk sheep	Raw wool: \$1.90/lb, sold by the bale or by the pound
<b>Julie &amp; Ken Rosenfeld</b> Renaissance Ridge Alpacas byjules67@gmail.com 415-663-8354	<i>Raw fiber:</i> Huacaya alpaca (200 lbs)  <i>Colors:</i> brown, rose gray, fawn, black, white	Raw premium alpaca fleece: \$25/pound Mill spun premium alpaca yarn: \$8/oz Handspun premium alpaca yarn: \$10/oz Premium alpaca batts \$6/oz Alpaca full fleece naturally tanned hides, when available: \$450/adult and \$250/cria
<b>Katie &amp; Sascha Grutter</b> GC Icelandics kcaggiebiz@gmail.com 530-949-1370	Icelandic (20-30 lbs)  <i>Colors:</i> white, cream, light gray, tan, caramel, milk chocolate, silver, dark chocolate, dark gray, to jet black	Worsted yarn: \$25/skein, 100 yards, double ply
<b>Kelli Dunaj</b> Spring Coyote Ranch kadunaj@springcoyoteranch.com 415-663-8354	<i>Raw fiber:</i> Navajo-Churro fleece and Jacob, alpaca, and llama fleece for blending (250 lbs, or 150 lbs washed fiber and yarn)  <i>Colors:</i> white, cream, shades of brown to black	Churro/alpaca blend yarn: \$22.50/4 oz skein, 1/750 weight Churro/mohair blend yarn: \$22.50/4 oz skein, 1/750 weight Churro lambswool yarn: \$22.50/4 oz skein, 1/750 weight Churro adult yarn: \$18.50/4 oz skein, 1/750 weight Churro adult yarn: \$18.50/4 oz skein, 1/400 weight Churro sabanilla (lace weight) yarn: \$10/2 oz ball Washed fleece: \$5 per ounce Raw unwashed churro or alpaca: price varies by color and softness

PRODUCER	BREEDS, COLORS & ANNUAL QUANTITIES	PRICE FOR MATERIALS
<b>Kim Bethel</b> Downhome Handspun Fibers downhomefibers@gmail.com	<i>Raw fiber:</i> Angora goat fleece (150 lbs)  <i>Other breeds:</i> Pygora goat  <i>Colors:</i> gray, white, shades of brown; naturally dyed colors available	Raw fiber: \$64/lb Locks: \$4/oz Naturally dyed locks: \$5/oz Hand spun yarn: \$30/skein, 80 yds Hand spun, naturally dyed yarn: \$40/skein Mohair roving: \$12/oz  (Note: If people buy in bulk I do give them perks, but nothing is set.)
<b>Lani Estill</b> Estill Ranches, LLC & Lani's Lana lani@lanislana.com estillranch@att.net 775-333-0882 or 775-722-8173	<i>Raw fiber:</i> Rambouillet  Please inquire; the scale of this Rambouillet wool pool most appropriate for brand development work.  <i>Colors:</i> white, gray, black	<i>Wholesale:</i> White sport weight yarn: \$22/4 oz skein White dk yarn: \$21/4 oz skein White worsted yarn: \$13/4 oz skein White fingering yarn: \$41/4oz skein Black dk yarn: \$25/4 oz skein Gray dk yarn: \$24/4 oz skein White/gray/black combed top: \$10/4 oz
		<i>Retail:</i> White sport weight/dk yarn \$33.50/4 oz skein White worsted yarn: \$22/4 oz skein White fingering yarn\$50/4 oz skein Black/gray dk yarn: \$33.50/4 oz skein Black/white combed top: \$18/4 oz Gray combed top: \$19/4 oz
<b>Leslie Adkins</b> Heartfelt Fiber Farm info@heartfeltfiberfarm.com 707-585-2841	<i>Raw fiber:</i> Icelandic sheep, Ouessant/Shetland sheep, Angora goats, Cashgora goats, Suri alpaca, and llama (70-80 lbs total from all animals)  <i>Colors:</i> white, gray, shades of brown and fawn	Specialty blends and limited runs. Prices vary each year.
<b>Lynn &amp; Jim Moody</b> Blue Oak Canyon Ranch lynn@blueoakcanyonranch.com	<i>Raw fiber:</i> Santa Cruz Island sheep (120 pounds)	Raw wool: \$15-\$20/lb
<b>Marcia Barinaga</b> Barinaga Ranch lists@barinagaranch.com	<i>Raw fiber:</i> East Friesian (300 lbs)	Sport weight 2-ply yarn: \$15/skein, 200 yards, natural colors white and brown  Grease wool for hand spinners: \$10/lb

PRODUCER	BREEDS, COLORS & ANNUAL QUANTITIES	PRICE FOR MATERIALS
<b>Marie Hoff</b> Capella Grazing Project capellagrazing@gmail.com	<i>Raw fiber:</i> Ouessant (20 fleeces that weigh about 2 to 2.5 lbs, every 6 months for the next year or two)  <i>Colors:</i> shades of brown and black	Raw ewes wool: \$20/lb or \$3.50/oz  Raw lambswool: \$25/lb or \$3.50/oz
<b>Marlie de Swart</b> Bo-Rage Yarn bma@sonic.net 415-663-9130	<i>Processed fiber:</i> Local blend of Corriedale/Finn cross, Wensleydale, Huacaya alpaca (75-100 lbs mill-spun yarn); please inquire for hand-spun quantities  <i>Colors:</i> white, brown/black	Mill spun yarn: \$25/skein, 4 oz, 200 yards each  Handspun yarn: \$30-\$40/skein, 4 oz on average
<b>Mary Pettis-Sarley</b> Twirl Yarn twirlyarn@wildblue.net	<i>Processed fiber:</i> Sheep, alpaca, Angora goat, Angora rabbit (700-800 lbs, conservative); yarns are blended in 30 lb lots  <i>Colors:</i> white, gray, black; naturally dyed colors	Single ply yarn: \$15/skein, 50 grams  Indigo-dyed: \$25/skein, 50 grams
<b>Maureen Macedo</b> Macedo's Mini Acre macedosminiacre@gmail.com	<i>Raw fiber:</i> Alpaca, llama, lionhead rabbit (240 lbs)  <i>Colors:</i> brown (light and medium), white, gray	Rovings: \$5/oz, natural. Currently have 15 total pounds in varying color combinations.  Yarn: \$25/skein, 200 yards  <i>dk and lace weight:</i> fawn, beige, dark brown and black, about 10 skeins of each color  <i>lace weight:</i> light gray, 15 skeins  <i>sport weight:</i> two-color combinations of brown/black, white/black, gray/brown. limited quantities  Fleeces: Prices range from \$30 to \$125. Variety of color, weight and microns. Limited quantity.
<b>Nancy Fleenor Thompson</b> Tolenas Mohair Farm nancyfleeny@gmail.com	Angora goat	Washed mohair fleece: \$40/lb
<b>Peggy Agnew</b> Red Creek Farm agnew.peggy@gmail.com 707-743-1295	<i>Raw fiber:</i> Lincoln/Merino/Cormo/Wensleydale cross (300 lbs)	Fleeces: \$20-\$25/lb, generally 6-9 lbs each  Roving: \$4.25-5.00/oz, white and natural colored. Most is Merino cross, some is blended with other fibers  White worsted yarn: \$100/lb, Merino cross, limited run, milled at Moro Wool Mill in Moro, NM

PRODUCER	BREEDS, COLORS & ANNUAL QUANTITIES	PRICE FOR MATERIALS
<b>Robin Lynde</b> Meridian Jacobs robin@meridianjacobs.com 707-688-3493	<i>Processed fiber:</i> Jacob wool yarn (50 lbs)  <i>Raw fiber:</i> inquire for whole fleeces  <i>Colors:</i> white, black, gray	Jacob yarn: \$30/skein  Limited runs, pricing subject to change.
<b>Sally Fox</b> Vreseis Limited sally@vreseis.com	<i>Raw fiber:</i> Organic Merino wool (1500 lbs, or approx. 700 lbs when cleaned and processed into yarn and roving)  <i>Colors:</i> white, light brown, dark brown, light silver, dark silver and black	Yarn: \$20/2 oz skein, sport weight or worsted weight in natural colors (white, light brown, brown, steel gray, black)  Roving: \$5/oz in natural colors (white, brown, gray and black)  Raw fleece: \$24/lb and \$2/oz, by the dirty weight.  <i>Note:</i> People can buy oz, pounds or tons. Wholesale price breaks at 100 lbs and 1000 lbs.
<b>Sandra Charlton</b> Sheepie Dreams sheepiedreams@gmail.com 415-734-1663 (text)	<i>Raw fiber:</i> Organic Romney x Wensleydale fleece (50 lbs)  <i>Other fiber:</i> 150 lbs of washed and unwashed wool, 50 lbs pin drafted roving, 50 lbs washed locks in storage	Locks: \$1.5/oz washed, \$1/oz unwashed  Fleeces: \$15/lb washed, \$10/lb unwashed  Roving: \$2.50/lb  Yarn: \$3.50/oz or \$15/skein  Batts: prices vary by size
<b>Sandy Wallace</b> Alpacas of Marin info@alpacasofmarin.com 626-818-3148	<i>Raw fiber:</i> Huacaya alpaca (200 lbs), white  Suri alpaca (150 lbs); white, some black, a small selection of brown	Fleeces: \$10-\$15/lb (Usually sells per fleece, \$30-\$100 each)
<b>Sarah Keiser</b> Wild Oat Hollow sarah.keiser@gmail.com	<i>Raw fiber:</i> Romney (30-35 lbs); Wensleydale/ Wensleydale-Cormo- Merino-Lincoln Cross (15 lbs)  <i>Colors:</i> white, gray	Fleeces: \$10/lb wholesale, \$13.50/lb retail
<b>Susan Timm</b> Timm Ranch ranchtimm@gmail.com	<i>Raw fiber:</i> Targhee x Rambouillet (1200 lbs)	Yarn: \$70/lb, sold by the cone, average 1.8 lbs  Raw wool: \$4/lb



# ACKNOWLEDGEMENTS

## STAFF

**Rebecca Burgess**  
Concept & ground support

**Jess Daniels**  
Concept & project  
management

**Marie Hoff**  
Producer Program Manager

**Dustin Kahn**  
Concept & book design  
and assembly

**Emily Cunetto**  
Machine knitting

**Heather Podoll**  
Book assembly

## VOLUNTEERS

**Marlie de Swart**  
Spinning consultant

**Mary Pettis-Sarley**  
Design consultant

**Jackie Post**  
Machine felting

**Marnie Jackson**  
Book assembly

## SPINNING VOLUNTEERS

**Elizabeth Bates**  
aka Oldknittylady on Ravelry

**Laurie Gray Bounsall**  
lgbounsall@gmail.com

**Caryl Carr**  
carylcc@gmail.com  
aka carylcc on Ravelry  
Spindles & Flyers spinning guild

**Amy Corbett**  
Four Ewe Farm, Vacaville, CA  
misewe4fiber@gmail.com

**Jenifer Dyer**  
dyerspun@iCloud.com

**Brenda Flowers**  
brendahflowers@gmail.com  
Spindles & Flyers spinning guild

**Carol A. Gray**  
Spindles & Flyers spinning guild

**Wendy Gilmore**  
wendyway@gmail.com  
waysfiberways.vpweb.com

**Kori Hargreaves**  
kori.hargreaves@gmail.com  
ecotonethreads.com

**Marie Hoff**  
capellagrazing@gmail.com  
hand-made-studio.org

**Grace Kang**  
Grace Handmade  
geskang@yahoo.com

**Jennifer Landau**  
jhlandau@earthlink.net

**Rose LeClerc**  
Calistoga Fiber Artist:  
spinner, natural dyer, weaver, knitter  
707-494-6422  
roze.leclerc@gmail.com

**Andrea "Cookie" Livingston-Shuman**  
aka Cookie48 on Ravelry  
Spindles & Flyers spinning guild  
and Serendipity Spinners

**Robin Pilatti**  
707-354-0181  
fleecetogarment.com

**Heather Podoll**  
hpodoll@gmail.com

**Susan Spieldenner**

**Susan Sullivan Maynard**  
aka SpinningSusan on Ravelry

**Helen Trejo**  
Graduate Student,  
Fiber Science & Apparel Design,  
Cornell University  
htrejo42@gmail.com  
hxgreensoul.wordpress.com

**Valerie Yep**  
valerie.yep@gmail.com



## FIBERSHED



## Alexis & Gillies Robertson

Skyelark Ranch

Brooks, CA

Skyelark Ranch is a pasture-based livestock ranch in the Capay Valley of Yolo County and is a family business operated in partnership by Alexis and Gillies Robertson. After several years working in environmental conservation, Alexis and Gillies followed their passion for combining local, high quality food production with sound environmental stewardship. Their goal is to raise livestock in a way that is at once humane and in balance with the land and community. Early in their ranching education, Alexis and Gillies quickly realized that they wanted to raise sheep, but it took several years of searching and preparation before a fateful and timely phone call from a nearby friend alerted them to the opportunity to acquire an entire flock of California Red sheep. The California Red breed was developed at UC Davis, and is known for rich naturally colored fleece in shades of cream and oatmeal.

### PRODUCTS

*Yarn:* California Red, 2-ply or single-ply bulky yarn

*Fiber:* Raw fleeces, roving, batting

*Other:* Sheepskin rugs

Raw fleeces, yarn, roving, and batting are available year round. Sheep are sheared in May or June.

### MICRON DATA

*California Red:* 27.1 (2014 test)

### SALES

Davis Farmers Market

Jack London Farmers Market

### CONTACT

*Email:* [farmhouse@skyelarkranch.com](mailto:farmhouse@skyelarkranch.com)

*Website:* [skyelarkranch.com](http://skyelarkranch.com)

*Facebook:* [facebook.com/SkyelarkRanch](https://facebook.com/SkyelarkRanch)



*Photos by Alycia Lang*



## Alexis & Gillies Robertson

Skyelark Ranch

Brooks, CA

### SAMPLES

California Red:

1. 2-ply yarn, milled at Yolo Wool Mill (Woodland, CA)
2. Single-ply bulky yarn, milled at Yolo Wool Mill (Woodland, CA)
3. Machine felted wool
4. Washed wool

### CONTACT

*Email:* [farmhouse@skyelarkranch.com](mailto:farmhouse@skyelarkranch.com)

*Website:* [skyelarkranch.com](http://skyelarkranch.com)

*Facebook:* [facebook.com/SkyelarkRanch](https://facebook.com/SkyelarkRanch)



1.



2.



3.



4.





## Amanda, Ed and Gabrielle Mann

Mann Family Farm

Bolinas, CA

The Mann family are relative newcomers to raising sheep, but their 64-acre former dairy farm is a historic property with a 19th Century barn on the rolling hills of seaside Bolinas. Ed and Gabrielle Mann were both born in Bolinas and are proud to be continuing in the area's rich and diverse agricultural heritage. The Mann family practices rotational grazing on lush, pesticide-free, coastal pastures with their mixed-breed herd that includes Corriedale, Wensleydale, Leicester, and CVM. Their wool is spun locally into soft yarn available in natural colors and naturally dyed.

### PRODUCTS

*Yarn:* 2-ply worsted Corriedale in all natural colors: cream, black and silver. Spun at Yolo Wool Mill.

### MICRON DATA

*Corriedale-Finn cross:* 30.3 (2014 test)

### SALES

*Online:* [etsy.com/shop/MannFamilyFarm](https://etsy.com/shop/MannFamilyFarm)

### CONTACT

*Email:* [events@mannfamilyfarm.com](mailto:events@mannfamilyfarm.com)

*Website:* [mannfamilyfarm.com](http://mannfamilyfarm.com)



*Top photo, clockwise from lower left: Amanda, Bella, Paul, Gabrielle, Ed and Sadie, with their dogs Tule and Hazel.  
Photos by Kalie Ilana Cassel-Feiss*



**Amanda, Ed and Gabrielle Mann**  
Mann Family Farm  
Bolinas, CA

**SAMPLES**

1. & 2. 2-ply Corriedale yarn, milled at Yolo Wool Mill  
(Woodland, CA)
3. Washed wool

**CONTACT**

*Email:* [events@mannfamilyfarm.com](mailto:events@mannfamilyfarm.com)

*Website:* [mannfamilyfarm.com](http://mannfamilyfarm.com)



1.



2.



3.



## Ariana & Casey Mazzucchi

Casari Ranch

Point Arena, CA

Ariana and Casey Mazzucchi are sheep ranchers at Casari Ranch, a 532-acre Ag Preserve. Their flocks include Dorset, Rambouillet, Shetland, Romney and Navajo-Churro sheep. They specialize in locally grown, milled and made wool bedding, custom rugs, blankets and artisan crafted home accessories, all of which are available at their new store: Casari Mercantile in Point Arena.

### PRODUCTS

*Yarn:* Dorset and Navajo-Churro yarn, milled at Yolo Wool Mill (Woodland, CA)

*Other:* Wool bedding, fabric, rugs, blankets, home accessories (dryer balls, wool scrubbies, dish mats), custom pillows and matts, custom feltings

### SALES

*Online:* [casariranch.com](http://casariranch.com)

*Phone order:* 707-882-1885

*Store:* Casari Mercantile, 264 Main Street,  
Point Arena, CA 95468

### CONTACT

*Email:* [ariana@casariranch.com](mailto:ariana@casariranch.com)

*Website:* [casariranch.com](http://casariranch.com)

*Phone:* 707-882-1885



*Photos by Paige Green*



**Ariana & Casey Mazzucchi**

Casari Ranch

Point Arena, CA

**SAMPLES**

1. Dorset yarn, milled at Yolo Wool Mill (Woodland, CA)
2. Navajo-Churro yarn, milled at Yolo Wool Mill (Woodland, CA)
3. Wool batting, milled at Casari Ranch

**CONTACT**

*Email:* [ariana@casariranch.com](mailto:ariana@casariranch.com)

*Website:* [casariranch.com](http://casariranch.com)

*Phone:* 707-882-1885





**Audrey Adams**  
Tombstone Livestock  
Sanger, CA

Audrey Adams raises Shetland sheep and Pygora goats near the Kings River in Fresno County. Shetland sheep are a conservation breed with a long history of adaptation to the British Isles; they are hearty yet praised for fine fiber in a rainbow of natural colors. Pygora goats are a breed created by crossing Mohair and Pygmy goats, creating a natural color gradient from blue-gray to tan with the lustrous, soft, and warm qualities of Mohair. Tombstone Livestock offers Shetland yarn suitable for lace and fine knitting, and raw fiber for a world of possibilities.

**PRODUCTS**

*Yarn:* sport weight Shetland yarn, spun at Mill Creek Fiber Works (Oakhurst, CA)

*Fiber:* Shetland roving and raw fleeces; occasionally angora and pygora fleece.

Sheep are professionally sheared at the end of March or first part of April each year.

**MICRON DATA**

*Shetland:* 33.2 and 35.0 (2015 tests)

**SALES**

Online: <http://www.ravelry.com/groups/it-had-to-be-ewe>

Ranch visits can be scheduled either by phone or email

**CONTACT**

*Phone:* 559-349-3208

*Email:* k9s4ewe@aol.com

*Photos courtesy of Tombstone Livestock*



**Audrey Adams**  
Tombstone Livestock  
Sanger, CA

**SAMPLES**

1. Shetland sport weight yarn, milled at Mill Creek Fiber Works (Oakhurst, CA)
2. Machine felted Shetland wool
3. Shetland wool (washed)

**CONTACT**

*Phone:* 559-349-3208

*Email:* k9s4ewe@aol.com



1.



2.



3.



*Photos courtesy of Caprette Cashmere*

## **Barbara & Ron Fiorica**

Caprette Cashmere & Love Spun Homespun  
Wilton, CA

Barbara and Ron Fiorica run a Cashmere and Colored Angora tribe of goats as well as assorted sheep in almost all wool types on just less than 2 acres in rural Sacramento County. Cashmere goats originated from Inner Mongolia, China, and produce naturally colored fiber in white, light-gray, and brown, while Angora goats produce a lustrous fiber called Mohair. Caprette Cashmere has been raising goats for 15 years on their small family farm, and they have been taught to judge Cashmere quality by one of the foremost experts in the field. Barbara is starting a small lot processing business with a Patrick Green Cottage Industry carding machine, which so far can process wool into batts, and will soon process roving, and ultimately Mohair and Alpaca as well.

### **PRODUCTS**

*Yarn:* Cashmere yarn; mohair-wool blend fingering weight yarn, spun at Heart & Soul Spinnery (Penn Valley, CA); other handspun depending on availability

*Other:* raw fiber, roving, and handcrafted items

February is fleece harvest time for sheep and Angora goats. Angora goats are also sheared again in August. The Cashmere goats are combed as they shed, and the fleeces are kept for processing.

### **MICRON DATA**

*Corriedale/Wenslydale ewe:* 36.5 (2013 test)

*Shetland/Lincoln/Wenslydale wether:* 35.2 (2013 test)

*Rambouillet wether:* 20.2 (2013 test)

*Corriedale ewe:* 28.6 (2013 test)

*Colored angora goat buck:* 26.7 (2013 test)

*Cashmere goat doe:* 17.6 (2013 test)

*Shetland sheep:* 37.6 (2013 test)

### **SALES**

*Online:* [caprettecashmere.com](http://caprettecashmere.com)

Selected trade shows

### **CONTACT**

*Email:* [rbfiorica@frontiernet.net](mailto:rbfiorica@frontiernet.net)

*Website:* [caprettecashmere.com](http://caprettecashmere.com)

*Phone:* 916-687-6406



## Barbara & Ron Fiorica

Caprette Cashmere & Love Spun Homespun  
Wilton, CA

### SAMPLES

1. Kid mohair 2-ply yarn, hand spun by Andrea D. Livingstone-Shuman
2. 2-year-old doe mohair 2-ply yarn, hand spun by Grace Kang (lighter sample is combed fiber, spun worsted; darker sample is carded fiber from the comb "waste," spun woolen)
3. Yearling doe mohair 2-ply yarn, hand spun by Jennifer Landau
4. Cashmere wether kid, hand spun
5. 50% mohair / 50% Romney wool, milled at Heart & Soul Spinnery (Penn Valley, CA)

### CONTACT

*Email:* [rbfiorica@frontiernet.net](mailto:rbfiorica@frontiernet.net)

*Website:* [caprettecashmere.com](http://caprettecashmere.com)

*Phone:* 916-687-6406







*Photos courtesy of Bev Fleming*

## **Beverly Fleming**

Ewe & Me 2 Ranch

Cotati, CA

Ewe & Me 2 Ranch raises Romeldale, Cotswald, Romney sheep, and red Angora goats in Sonoma County, California. Beverly Fleming has owned and operated Ewe & Me 2 Ranch for nearly two decades, and offers raw fiber and finished yarns in a selection of natural colors. Romney sheep are in the English Longwool Family and produce wool with a wide range of characteristics and applications. Romney fleece yields diverse yarns and offers the opportunity to try many different approaches when handspinning, and can be knit into warm outerwear layers.

### **PRODUCTS**

*Fiber:* processed roving; fleece from white and natural-colored sheep: Romeldale and Merino for fine wool, Romney, Cotswald, and crossbreds for medium and long wool.

The best time to buy raw fleeces is at the shearing in March (call for dates). Availability varies at other times.

### **MICRON DATA**

*Romney:* 28.1, 30.9, 33.8, 34.5, 38.9 (2015 tests)

### **SALES**

*Farm:*

Call or email me to come out to the farm in Cotati.

*Fiber events:*

Sacramento, Livermore, Boonville Fair and Sonoma County local events.

### **CONTACT**

*Phone:* 530-301-3154

*Email:* bflamamama@yahoo.com

### **SAMPLES**

1. Romney wool, hand spun by Rose LeClerc
2. Romney wool (washed)







## Bodega Pastures

Bodega, CA

Bodega Pastures is a beautiful 1000-acre sheep ranch located in west Sonoma County just outside of Bodega, California. Bodega Pastures manages sheep in an organic and humane way; they research and utilize grazing and management methods that protect both sheep and the native coastal prairie ecosystem. The flock is rotated to avoid damage to land, maintain healthy pastures, and avoid predators, and the sheep live a good life on pasture, eating grass and drinking spring water that flows from high ridges. Bodega Pastures practice natural, ecological, ethical, sustainable ranching with a mixed flock of Corriedale, Romney, Navajo-Churro, Suffolk, Border Leicester, and Wensleydale breeds selected for wool color and texture, hardiness and meat quality. Their wool is prized by handspinners, knitters and weavers.

### PRODUCTS

*Yarn:* Worsted weight, sport weight, and bulky, milled at Bartlett Yarns (Harmony, ME)

*Fiber:* Roving, batting, and fleeces (greatest variety available shortly after shearing)

*Other:* Hand-loomed socks, hand-knitted hats and mitts, and sheepskin vests. New products in development

Sheep are usually sheared in early May.

### BREEDS

Corriedale, Romney, Navajo-Churro, Suffolk, Border Leicester, Wensleydale. Many of the sheep are colored.

### MICRON DATA

*Navajo-Churro:* 30 and 31.1 (2013 tests)

*Corriedale:* 28.5 and 29.3 (2015 tests)

### SALES

*Farmers' markets:* Sebastopol – year round; Occidental and Bodega Bay – June to October. Temescal – at the Fibershed Marketplace booth

*Festivals:* Valley Ford Wool Festival, Heirloom Expo, Fibershed events

*Store:* Artisans' Coop in Bodega (for yarn)

*Online stores:* [bodeganet.com/BodegaPastures](http://bodeganet.com/BodegaPastures) and [fibershedmarketplace.com](http://fibershedmarketplace.com)

*Ranch:* Visitors are welcome to our ranch outside Bodega, but please call 707-327-6816 to arrange a time.

### CONTACT

*Phone:* Hazel Flett, 707-327-6816

*Email (slower):* [pasture@sonic.net](mailto:pasture@sonic.net)



*Photos by Paige Green*



## Bodega Pastures

Bodega, CA

### SAMPLES

1. Wool yarn, milled at Bartlett Yarns (Harmony, ME)
2. Machine felted Navajo-Churro wool
3. Romney wool batting
4. Corriedale wool, hand spun by Heather Podoll

### CONTACT

*Phone:* Hazel Flett, 707-327-6816

*Email (slower):* [pasture@sonic.net](mailto:pasture@sonic.net)







*Photos courtesy of Kirabo Pastures. Top photo: Carrie and John with John's mother, Jean Near (center), who celebrated her 100th birthday in 2014.*

## **Carrie Sparrevohn & John Ham**

Kirabo Pastures

Upper Lake, CA

Kirabo Pastures is a 250-acre ranch in Lake County, California, raising organic walnuts and a variety of livestock, including Merino sheep. John and Carrie began their sheep business together in 2014 when John's mother, Jean Gowan Near of Utopia Ranch, gifted them eleven ewes. The 2016 flock consists of thirty-five animals and is growing rapidly! Their farming practices encompass organic methods throughout, though the sheep are not certified organic. Kirabo Pastures sells soft-to-the-touch Merino wool as naturally colored, raw (unwashed from blanketed animals) fleece and processed wool roving appropriate for hand spinning, in lustrous white or exciting natural colors: midnight black, misty gray, and many shades of brown. All Kirabo Pastures products are carefully stored in an insect and smoke-free environment.

### **PRODUCTS**

*Fiber:* Merino roving for spinning and felting in felting white and natural colors, milled at Morro Fleece Works (Morro Bay, CA); raw Merino fleeces from blanketed sheep in white and natural colors

*Other:* Merino sheepskins

Shearing is in April, so May is the best time to find the widest selection of raw fleece

### **MICRON DATA**

*Moorit merino ewe:* 27.9 (2016 test)

*Black merino ewe:* 25.1 (2016 test)

*White merino ewe:* 23.4 (2016 test)

### **SALES**

*Online:* [kirabopasture.com/shop](http://kirabopasture.com/shop)

*Events:* California Wool & Fiber Festival, Boonville CA

### **CONTACT**

*Email:* [carrie@kirabopastures.com](mailto:carrie@kirabopastures.com), [LMMidwife@gmail.com](mailto:LMMidwife@gmail.com)

*Phone:* 707-275-9252

*Website:* [kirabopastures.com](http://kirabopastures.com)

[facebook.com/kirabopastures/](https://facebook.com/kirabopastures/)



## Carrie Sparrevohn & John Ham

Kirabo Pastures

Upper Lake, CA

### SAMPLES

1., 2. & 3. 2-ply Merino yarn, hand spun by  
Marie Hoff and Bonnie Reardon

4., 5. & 6. Merino wool (washed)

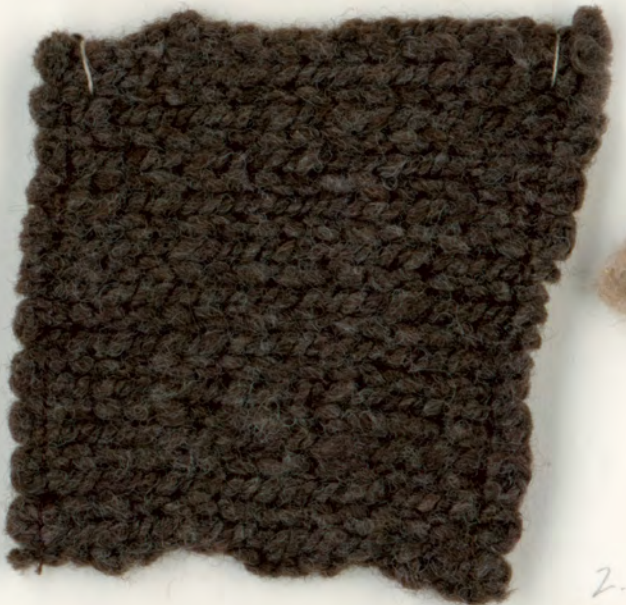
### CONTACT

*Email:* [carrie@kirabopastures.com](mailto:carrie@kirabopastures.com), [LMMidwife@gmail.com](mailto:LMMidwife@gmail.com)

*Phone:* 707-275-9252

*Website:* [kirabopastures.com](http://kirabopastures.com)

[facebook.com/kirabopastures/](https://facebook.com/kirabopastures/)







*Photos courtesy of Blue Barn Farm*

## **Catherine Lawson**

Blue Barn Farm

El Dorado, CA

Nestled in the gentle rolling hills of El Dorado County, Blue Barn Farm is a small farm run by Catherine Lawson, raising merino sheep and cashmere goats. Blue Barn Farm offers white and naturally-colored raw fiber, roving, and batts, which are all popular as a medium for fiber artists including dyers, spinners, and felters. Products are available on-site locally, or at fiber events in Northern California and Oregon.

### **PRODUCTS**

*Fiber:* Merino roving (Morro Fleece Works), batts, and raw fiber in white and natural colors; raw and cloud cashmere in white and shades of taupe and tan

Sheep are sheared between April and May and raw fleeces are available beginning in late May to early June.

### **MICRON DATA**

*Merino ewe:* 22.1 (2016 test)

### **SALES**

*Farm:* Schedule a visit for on-site pickup

*Events:* El Dorado County Fair, Pacerville CA; Black Sheep Gathering, Eugene OR; Oregon Flock & Fiber Festival, Canby OR; Lambtown Festival, Dixon CA; Fiber Fusion, Chico CA

### **CONTACT**

*Email:* [catherine\\_lawson@sbcglobal.net](mailto:catherine_lawson@sbcglobal.net)

*Phone:* 530-957-7000

### **SAMPLES**

1. 2-ply Merino yarn, hand spun by Robin Pilatti
2. Merino wool (washed)







**Dan Macon**  
**Flying Mule Farm**  
**Auburn, CA**

Flying Mule Farm is a partnership between the Macon Family and Roger Ingram. The small-scale commercial flock grazes on foothill rangelands and irrigated pastures near Auburn, California. Focusing on public and sheep producer education and the demonstration of grass-based production practices, Flying Mule Farm is committed to the development of a genetic base designed to optimize low-input grass-based production (with little or no supplemental feed inputs); production of a high-quality wool clip and flavorful, tender grass-fed lamb; the use and demonstration of low-stress stockmanship techniques and handling systems, as well as guardian and stock dogs in a small-farm flock; modeling water-efficient irrigation technology for foothill ranchers and nonlethal predator management systems; and support for other local sheep producers.

**PRODUCTS**

*Fiber:* Raw fleeces from Blueface Leicester and Cheviot cross sheep, Shropshire and Suffolk sheep, Dorper sheep, and mule lambs

**MICRON DATA**

*Ewe:* 34.7 (2016 test)

**SALES**

Contact Dan for purchasing info before spring shearing in May.

Complimentary local delivery (within 150 miles of Auburn, CA) for whole clip sales.

**CONTACT**

*Email:* [flyingmulefarm@gmail.com](mailto:flyingmulefarm@gmail.com)

*Website:* [facebook.com/flyingmulefarm/](https://facebook.com/flyingmulefarm/)

*Photos courtesy of Flying Mule Sheep Company*



**Dan Macon**  
Flying Mule Farm  
Auburn, CA

**SAMPLES**

1. Suffolk wool (washed)
2. Mixed breed wool batting
3. Felt (white, mixed breeds)

**CONTACT**

*Email:* [flyingmulefarm@gmail.com](mailto:flyingmulefarm@gmail.com)

*Website:* [facebook.com/flyingmulefarm/](https://facebook.com/flyingmulefarm/)

1.

2.

3.



*Photo courtesy of Royal Fibers*



*Photos by Paige Green*

## **Dana Foss** Royal Fibers Dixon, CA

Royal Fibers Farm raises Guanacos, Alpacas and Sheep for their fiber, which is processed, used and/or sold to fiber enthusiasts worldwide. Guanacos are very rare; there are only about 300 in the United States and about 200,000 left in South America. Their fleece is softer than Cashmere, but must be dehaired to remove the long course guard hairs that protect the animals from the harsh conditions they face in the wild. Royal Fibers Farm also oversee The Columbine Spinning Company, purchased by Dana and Ed Foss in 2011. Originally brought to the market in 1971, this versatile wheel was the first all metal spinning wheel, and remains the favorite metal wheel internationally. With self-lubricating bearings, sturdy powder-coated steel frame and ergonomic light-weight design, the Columbine Wheel is easy to use, travel with and won't warp, split, or swell with changes in external environment. They are manufactured in Dixon, CA at the Royal Fibers Farm.

### **PRODUCTS**

*Fiber:* Alpaca, Guanaco, and Wensleydale fiber and fleece

*Other:* Alpaca, Guanaco, Wensleydale breeding stock

### **MICRON DATA**

*Yearling guanaco "Fingon":* 17.7  
(2015 test, sample on following page)

### **SALES**

*Online:* [royalfibers.co](http://royalfibers.co)

*Online:* [etsy.com/shop/royalfibers](http://etsy.com/shop/royalfibers)

Store at the ranch opening for Christmas

### **CONTACT**

*Email:* [06foss@gmail.com](mailto:06foss@gmail.com)

*Phone:* 707-249-3276



**Dana Foss**  
Royal Fibers  
Dixon, CA

**SAMPLES**

1. 2-ply 90% Guanaco/10% Superfine Merino yarn
2. Yearling guanaco fiber (dehaired and picked) "Fingon"
3. Adult guanaco fiber "Moon Child"

**CONTACT**

*Email:* 06foss@gmail.com

*Phone:* 707 249-3276



1.



2.



3.





*Photos courtesy of Menagerie Hill Ranch*

## **Deb Galway** Menagerie Hill Ranch Vacaville, CA

Menagerie Hill Ranch is a full-service Northern California alpaca ranch, located in the English Hills area of Vacaville, California. Deb Galway and Kirk Howard have raised a menagerie of animals but now focus their care on alpacas, for their easy-going nature and luxuriously soft fiber. Menagerie Hill Ranch alpacas are bred for breeding stock and for fiber, and their focus is on continuous improvement in color vibrancy, fineness, density, and staple length, while maintaining excellent conformation and peaceful personality.

### **PRODUCTS**

*Yarn:* alpaca yarn milled at Mill Creek Fiber Works (Oakhurst, CA)

*Fiber:* raw alpaca fiber, foving, and fleeces

*Other:* alpacas for sale to breeders and others who want fiber animals and pasture pets

Shearing is in April. After sorting and grading, the nicest fleeces are set aside to sell raw. The rest gets classified and packaged with like quality fiber for processing over the next several months. Special requests can be accommodated.

### **MICRON DATA**

*Grade 3, Fine:* 23-25.9 microns

*Grade 4, Medium:* 26-28.9 microns

### **SALES**

*Online:* MenagerieHillRanch.com (please note inventory changes constantly; email for additional and new products).

### **CONTACT**

*Email:* deb@menageriehillranch.com

*Website:* menageriehillranch.com

### **SAMPLES**

1. 2-ply sport weight alpaca yarn (grade 3), milled at Mill Creek Fiber Works (Oakhurst, CA)
2. Black alpaca roving (grade 4)







*Photos by Alycia Lang*

## **Dru Rivers**

### **Full Belly Farm**

### **Guinda, CA**

Full Belly Farm is a 350-acre certified Organic farm in the Capay Valley, producing an amazing diversity of vegetables, herbs, nuts, flowers, and fruits year-round. The farm also has a flock of chickens, a herd of sheep, a tribe of goats, and several cows. Full Belly Farm sells naturally colored yarn, roving, and sheepskins from their organically raised sheep; their herd is a blend of Rambouillet, Lincoln, Suffolk, and Merino. Full Belly Farm is committed to environmental stewardship, has been using Organic farming methods since 1985, and is certified by California Certified Organic Farmers (CCOF). The farm is well known for its many outreach and educational activities including the annual Hoes Down Harvest Festival celebrating rural life and sustainability.

## **PRODUCTS**

*Yarn:* 3-ply yarns (250 yds./4 oz. skein) in natural colors including white, gray, dark brown, and twill, milled at Green Mountain Spinnery (Putney, VT) where the workers take care that all processes are Organic. Samples available upon request.

*Fiber:* Roving and batting in natural colors including white, gray, dark brown, and twill.

## **BREEDS**

Rambouillet, Lincoln, Suffolk and Merino

## **SALES**

*Online store:* [fullbellyfarm.com](http://fullbellyfarm.com)

*By phone:* 530-796-2214

*Farm:* Call for an appointment

*Markets:* Yarn available at farmer's markets throughout the San Francisco Bay Area and at various local stores; please call for a list.

## **CONTACT**

*Email:* [produce@fullbellyfarm.com](mailto:produce@fullbellyfarm.com)

*Phone:* 530-796-2214



**Dru Rivers**  
Full Belly Farm  
Guinda, CA

**SAMPLES**

1., 2., 3. & 4. 3-ply yarn of mixed breeds (Rambouillet, Lincoln, Suffolk, Merino), milled at Green Mountain Spinnery (Putney, VT)

**CONTACT**

*Email:* [produce@fullbellyfarm.com](mailto:produce@fullbellyfarm.com)

*Phone:* 530-796-2214



1.



2.



3.



4.





## **Erin Maclean**

Bungalow Farm Angora  
Sacramento, CA

Bungalow Farm raises top quality German Angora rabbits bred with high quality lines for outstanding wool production. German Angora coats are dense and matt free, and at Bungalow Farm they are raised humanely and shorn gently. The angora wool from Bungalow Farm is made into roving, felting, batting, and yarn. Bungalow Farm practices selective and intentional breeding using the set goals established by the International Association of German Angora Rabbit Breeders standard. Most of their animals are IAGARB registered meaning they have met the IAGARB Standard of the German Angora for body type, wool type, and wool production.

### **PRODUCTS**

*Yarn:* Angora-blend yarn (wool used for blending is locally sourced).

*Fiber:* Angora and angora-blend pencil roving, batting, and roving. Pure white, prime German Angora may be available upon request.

*Other:* Knitting pattern kits.

### **MICRON DATA:**

*German Angora:* 15.725 average (1-year-old doe) (2015 tests)

### **SALES**

*Online:* [bungalowfarm.com](http://bungalowfarm.com)

### **CONTACT**

*Email:* [angora@bungalowfarm.com](mailto:angora@bungalowfarm.com)

### **FIBER SAMPLE**

German Angora rabbit, prime adult.



*Photos courtesy of Bungalow Farm Angora*







*Photos by Paige Green*

## Hopland Research and Extension Center Hopland, CA

The Hopland Research and Extension Center (HREC) is the University of California's principal field research facility for agriculture and natural resources in the North Coast region. A diversity of soils, plant and animal communities, and elevations makes HREC representative of many parts of the Coast Range in northwestern California. In 1951, the University purchased the 4,630-acre Roy L. Pratt Ranch in Hopland, California to use as a site for long-term, controlled research on native rangelands, watersheds, and wildlife. Most of the acreage is rangeland of rugged topography, situated in the foothills of the Mayacamas Mountains, part of the Coast Range. The Center maintains a research sheep flock of 600 to 1,000 breeding ewes that graze the majority of the Center's rangelands. Lambing generally occurs between November and February, and shearing takes place in April. Many of the Center's sheep are involved in animal science or veterinary research projects.

### PRODUCTS

*Fiber:* Raw fleece available by the bale

### MICRON DATA

*Targhee sheep:* 22-23.0 (average)

### SALES

*Farm:* Inquire about baled wool purchases prior to shearing

### CONTACT

*Email:* [jelewers@ucanr.edu](mailto:jelewers@ucanr.edu) (Jim Lewers)

*Phone:* 707-744-1427 ext. 110

### SAMPLES

1. 2-ply Targhee yarn, hand spun by Valerie Yep
2. Targhee wool (washed)







*Photos courtesy of Nebo-Rock Ranch & Textiles*

## **Janet Heppler**

Nebo-Rock Ranch & Textiles  
Covelo, CA

Nebo-Rock Ranch & Textiles is located in beautiful Round Valley in the northeastern part of Mendocino County, close to the small town of Covelo. The Ranch is home to both White and Natural Colored Angora Goats, White and Natural colored Merino Sheep, Angora Rabbits and a variety of other farm animals (chickens, horses, a pig, dogs and cats). All the fiber animals produce multiple shades of natural colored handspinning fiber. Janet Heppler has over 33 years of fiber experience, from animal husbandry and ranching to fine fiber arts. Janet is an avid spinner and weaver and knowledgeable about each aspect of fiber processing; she shears her own animals, washes the fiber, spins it into yarn, and weaves the yarn into garments and homegoods. Nebo-Rock Ranch produces award-winning fleeces and attends fairs and gatherings throughout the west coast. Nebo-Rock Ranch is a two-time winner of the Black Sheep Cup at the Black Sheep Gathering.

### **PRODUCTS**

*Yarn:* handspun Merino yarn, Angora rabbit yarn, and novelty yarn in limited quantities (one of a kind); mill-spun Merino yarn, in natural colors and dyed; Mill-spun yarn of 50% Angora goat and 50% Merino, spun at Mountain Meadow Wool Mill (Buffalo, WY).

*Fiber:* Merino roving for both spinning and felting; Merino-Angora rabbit-blend roving; raw (unwashed), covered, hand spinner Merino wool fleeces, in both natural and white; Mohair fleeces from Angora goats; Angora rabbit fur in white and natural colors; Mohair locks.

*Other:* Merino sheep skins and goat skins.

### **MICRON DATA**

*Mohair:* 19.3 (2014 test)

*Merino:* 18.4 (2014 test)

### **SALES**

*Website:* [nebo-rockranch.com](http://nebo-rockranch.com)

*Events:* Black Sheep Gathering – Eugene, OR / Valley Ford Wool Festival – Valley Ford, CA / Conference of Northern California Handweavers (CNCH) / Natural Fiber Fair – Arcata, CA / Mendocino County Fair and CWFF – Boonville, CA / Lambtown – Dixon, CA / Oregon Flock & Fiber Festival – Canby, OR / Monterey County Fair / Humboldt County Fair

### **CONTACT**

*Email:* [nebo-rock@saber.net](mailto:nebo-rock@saber.net)

*Phone:* 707-983-9147

## Janet Heppler

Nebo-Rock Ranch & Textiles

Covelo, CA

### SAMPLES

1. Merino yarn, milled at Mountain Meadow Wool Mill (Buffalo, WY)
2. Merino wool (washed)
3. Merino roving, milled at Morro Fleece Works (Morro Bay, CA)
4. 25% angora rabbit/75% wool 2-ply yarn, hand spun by Helen Trejo

### CONTACT

*Email:* [nebo-rock@saber.net](mailto:nebo-rock@saber.net)

*Phone:* 707-983-9147



1.



2.



3.



4.





**Jean Near**  
Utopia Ranch  
Redwood Valley, CA

Born and raised in Mendocino, California, Jean Near has a 96-year history in her region in the Potter and Redwood Valleys. Jean's Utopia Ranch raises some of our region's pre-eminent merino sheep, with more than 40 years' worth of award-winning fleeces coming from the flock. The small herd is just over a few dozen mature sheep that were all born and raised on the ranch; always with careful attention to their well-being and the quality of their wool.

**PRODUCTS**

*Fiber:* Merino and Merino-cross spinning wool, in lustrous white or exciting natural colors: midnight black, misty gray, rich brown, and some exotic variegated blends.

**MICRON DATA**

*Merino ewe:* 22.1 (2013 test)

*Merino wether:* 24.3 (2013 test)

**SALES**

*Online:* [jeannear.com](http://jeannear.com)

[fibershedmarketplace.com](http://fibershedmarketplace.com)

**CONTACT**

*Website:* [jeannear.com](http://jeannear.com)

*Email:* [jeannear1914@gmail.com](mailto:jeannear1914@gmail.com)



*Photos by Paige Green*

**Jean Near**  
Utopia Ranch  
Redwood Valley, CA

**SAMPLES**

1. Merino 2-ply yarn, hand spun by Jenifer Dyer
2. Merino roving
3. Merino wool (washed)

**CONTACT**

*Website:* [jeannear.com](http://jeannear.com)

*Email:* [jeannear1914@gmail.com](mailto:jeannear1914@gmail.com)



1.



2.



3.





**Jim Jensen**  
Jensen Ranch  
Tomaes, CA

Jensen Family Ranches was established in 1856 and represents six generations of livestock production and land stewardship in northern Marin County. Their philosophy focuses on low input land stewardship and grazing management to improve and reintroduce natural nutrient cycling and vegetation management with grazing animals, and results in seasonally available lamb for local restaurants, and durable wool for use in bedding, batting, and felted projects. Jim is a Stewardship Field Associate with the Marin Agricultural Land Trust (MALT), where he assists in the monitoring of conservation easements as well as with partner agencies on a variety of conservation projects and programs, including soil health.

## PRODUCTS

*Fiber:* raw fleece from white-faced Columbia-Dorset-Suffolk cross sheep

## MICRON DATA

*Suffolk cross ram:* 31.6

*Suffolk cross ewe:* 31.3 (2016 test)

## SALES

*Farm:* Contact Jensen Ranch to inquire about purchasing information prior to spring shearing.

## CONTACT

*Email:* [jjensen@malt.org](mailto:jjensen@malt.org)

*Phone:* 707-888-9922



*Photos by Paige Green (top & center), bottom photo courtesy of Jensen Ranch*

**Jim Jensen**  
Jensen Ranch  
Tamales, CA

**SAMPLES**

1. Columbia-Dorset-Suffolk cross wool (washed)
2. Batting (white) from Columbia-Dorset-Suffolk cross sheep
3. Felt (white) from Columbia-Dorset-Suffolk cross sheep

**CONTACT**

*Email:* [jjensen@malt.org](mailto:jjensen@malt.org)

*Website:* 707-888-9922







## **Julie & Ken Rosenfeld**

Renaissance Ridge Alpacas  
Mount Aukum, CA

Renaissance Ridge Alpacas was born when Julie and Ken Rosenfeld left hectic city lives in Boston to live off the land in the Sierra foothills of California. Julie and Ken steward an extraordinary flock of alpacas on a solar-powered ranch in Mt. Aukum, along the easternmost stretches of our Fibershed. They breed with a purpose — to breed fiber to its fullest potential, improving every generation. Each breeding is made with that goal in mind, while honoring the overall health of the animal. Through hard work and dedication, Renaissance Ridge Alpacas have created a nationally recognized award-winning herd of alpacas producing elite fiber. Their luxurious fiber comes in a stunning array of natural colors in shades of cream, brown, gray, and black.

### **PRODUCTS**

*Yarn:* premium alpaca yarn, handspun or mill-spun at Heart & Soul Spinnery (Penn Valley, CA)

*Fiber:* alpaca roving and batts

Shearing is in April and fiber may be requested and reserved ahead of time.

### **MICRON DATA**

*Alpaca:* 17.0 (2014 test)

### **SALES**

*Website:* RenaissanceRidgeAlpacas.com

### **CONTACT**

*Email:* byjules67@gmail.com



*Photos by Paige Green*

**Julie & Ken Rosenfeld**  
Renaissance Ridge Alpacas  
Mount Aukum, CA

**SAMPLES**

1. Undyed, unblended brown Huacaya yarn,  
milled at Heart & Soul Spinnery (Penn Valley, CA)
2. Undyed, unblended rose gray Huacaya yarn,  
milled at Heart & Soul Spinnery (Penn Valley, CA)
3. Medium fawn Huacaya alpaca (washed fleece)

**CONTACT**

*Email:* byjules67@gmail.com



1.



2.



3.





*Photos courtesy of GC Icelandics*

## **Katie & Sascha Grutter**

GC Icelandics

Palermo, CA

In the small, rural town of Palermo, CA, husband and wife Sascha and Katie Grutter, along with their young children, raise a small flock of Icelandic sheep for meat and wool. The sheep graze on a mixture of pasture and hay throughout the year, and lamb in the spring, which works out well for California's mild spring weather. Much of the raw wool is taken to Yolo Wool Mill for local processing, allowing the Grutters time to learn how to process their own wool and also do some felting and crafts with their wool. The Grutters are members of Icelandic Sheep Breeders of North America, and have been raising this breed since 2011. Icelandic sheep are a heritage breed that is relatively new to the United States, imported in the mid 1980s, and the dual-coated fleece and hearty, heritage qualities make the breed special. They have to be sheared twice a year, in both the fall and spring, producing a large amount of wool per ewe, and the markings and coloring of the sheep also provide an amazing rainbow of color. They are the sheep of the Vikings.

### **PRODUCTS**

*Yarn:* Natural colored Icelandic yarn, spun at Yolo Wool Mill (Woodland, CA)

*Fiber:* Icelandic fleece and roving in natural colors

### **MICRON DATA**

*Icelandic:* 34.2 (2016 test)

### **SALES**

*Farm:* Schedule a visit

### **CONTACT**

*Email:* [kcaggiebiz@gmail.com](mailto:kcaggiebiz@gmail.com)

*Phone:* 530-949-1370

*Website:* [facebook.com/GcIcelandicSheep](https://facebook.com/GcIcelandicSheep)

### **SAMPLES**

1. 2-ply Icelandic DK weight yarn, milled at Yolo Wool Mill (Woodland, CA)
2. Icelandic wool (washed)







**Kelli Dunaj**  
 Spring Coyote Ranch  
 Marshall, CA

Spring Coyote Ranch raises Navajo-Churro and Jacob sheep, llamas, alpacas, Wagyu cattle, heritage poultry, and 5 acres of olives in West Marin County. Overlooking Tomales Bay, the hillside pasture is perfect for sustainable grazing. Spring Coyote Ranch is a proud member of The Livestock Conservancy, a nonprofit dedicated to saving endangered livestock breeds and encouraging diversity on the American farm. The Navajo-Churro is considered a “threatened” breed, and Kelli not only cares for and breeds the sheep, but produces Navajo Churro yarn to preserve the associated artisanal weaving culture.

**PRODUCTS**

*Fiber:* Navajo-Churro fleece, fiber, raw and washed; Jacob, alpaca, and llama fleece for blending

Shearing takes place twice per year (February and late August). Fleeces are available year round, however softer fleeces and specific color choices please contact right after shearing.

*Yarn:* Navajo Churro wool yarn and wool-alpaca blend yarn is available in beautiful shades of cream, gray, golden brown, black and deep chestnut, and well suited for natural dyeing.

**MICRON DATA**

*Navajo-Churro:* 30.3 “Chelaya”  
 (2015 test, sample on following page)

**SALES**

*Email:* [kadunaj@springcoyoteranch.com](mailto:kadunaj@springcoyoteranch.com) or make an appointment to visit the farm.

*Market:* Point Reyes Farmers Market (June-November) in Point Reyes Station

**CONTACT**

*Email:* [kadunaj@springcoyoteranch.com](mailto:kadunaj@springcoyoteranch.com)

*Phone:* 415-663-8354

*Facebook:* [facebook.com/springcoyoteranch](https://facebook.com/springcoyoteranch)

*Website:* [springcoyoteranch.com](http://springcoyoteranch.com)



*Photos by Alycia Lang (top & bottom), center photo by Kelli Dunaj*





**Kelli Dunaj**

Spring Coyote Ranch  
Marshall, CA

### SAMPLES

1. Navajo-Churro lamb "Hope"
2. Navajo-Churro lamb "Leon"
3. Navajo-Churro lamb "Domino"
4. Navajo-Churro adult "Ruth"
5. Navajo-Churro adult "Estrella"
6. Navajo-Churro adult "Chelaya"

### CONTACT

*Email:* [kadunaj@springcoyoteranch.com](mailto:kadunaj@springcoyoteranch.com)

*Phone:* 415-663-8354

*Facebook:* [facebook.com/springcoyoteranch](https://facebook.com/springcoyoteranch)

*Website:* [springcoyoteranch.com](http://springcoyoteranch.com)



## **Kelli Dunaj**

Spring Coyote Ranch  
Marshall, CA

### **SAMPLES**

7. & 8. Machine felted Navajo-Churro wool (natural colors)

9. Navajo Churro yarn, hand spun by Valerie Yep

### **CONTACT**

*Email:* [kadunaj@springcoyoteranch.com](mailto:kadunaj@springcoyoteranch.com)

*Phone:* 415-663-8354

*Facebook:* [facebook.com/springcoyoteranch](https://facebook.com/springcoyoteranch)

*Website:* [springcoyoteranch.com](http://springcoyoteranch.com)



7.



8.



9.





## Kim Bethel

Downhome Handspun Fibers  
North Fork, CA

Kim Bethel follows the cycles of nature, growing nourishing food, using astonishing dye plants, and raising animals with love and admiration. Kim tends a herd of angora goats that produce luxurious fiber which is milled into roving onsite. Situated on the edge of the Upper San Joaquin River, Downhome Fiber Mill specializes in angora and pygora goat fleece processing, and produces roving of unparalleled quality. The magic of the mill machines cuts down the laborious chore of picking, cleaning and carding fiber. Kim also spins by hand in the early morning when she can meditate and listen deeply. From all of this and her imagination are blended the elements to create wearable, usable and beautiful items. You too can use her fiber for your own treasures.

## PRODUCTS

*Yarn:* Handspun Mohair in natural colors and naturally dyed; rug yarn

*Fiber:* Mohair fleeces and roving processed on-site; naturally dyed Mohair locks

*Other:* Hand-knit and hand woven finished products

## MICRON DATA

*Angora goat kid:* 21.4 (2013 test)

*Angora goat old doe:* 38.1 (2013 test)

*Angora goat:* 24.5 (2014 test)

## SALES

*Online:*  
[downhomehandspunfibers.com](http://downhomehandspunfibers.com)

[fibershedmarketplace.com](http://fibershedmarketplace.com)

*Craft fairs:* email for current schedule.

## CONTACT

*Email:* [downhomefibers@gmail.com](mailto:downhomefibers@gmail.com)

*Website:* [downhomehandspunfibers.com](http://downhomehandspunfibers.com)



*Photos by Alycia Lang*

## **Kim Bethel**

Downhome Handspun Fibers  
North Fork, CA

### **SAMPLES**

1. & 2. Mohair yarn, handspun by Kim Bethel
3. Raw mohair fiber

### **CONTACT**

*Email:* [downhomefibers@gmail.com](mailto:downhomefibers@gmail.com)

*Website:* [downhomehandspunfibers.com](http://downhomehandspunfibers.com)



1.



2.



3.





*Photos by Paige Green*

## **Lani Estill**

Estill Ranches, LLC & Lani's Lana  
Eagleville, CA

Estill Ranch raises Rambouillet ewes on range land in the High Desert Area of the Great Basin. The sheep constantly move under the watchful eye of a full time sheepherder and range from fall alfalfa fields, to winter open range sage steppe, to lambing areas also in sage steppe range lands, and then raise their lambs in the Warner Mountains of Northeast Lassen County. Some ewes lamb in the lambing barn and then graze on permanent pasture fields before heading to the Mountains for the summer. Estill Ranch is a family ranching business and the fourth generation is now involved full-time in the ranch. Estill Ranch is currently implementing a Carbon Farm Plan and scaling up their compost operation. By the 2016 wool clip, they hope to be fully certified as a Climate Beneficial Farm. Estill Ranch is excited to be marketing wool products in their home region in Northern California and Nevada.

## **PRODUCTS**

*Yarn:* Superfine Rambouillet in sport, DK, worsted, and fingering weights in natural white. Natural gray and black available in DK weight.

*Fiber:* Superfine Rambouillet combed top roving available in white, gray, and black; raw wool sold in bulk to one primary buyer each year. If you are interested, please call early in the year.

Shearing is in May.

## **MICRON DATA**

*Ranch micron average: 22.3*

## **SALES**

*Online:* [lanislana.com](http://lanislana.com)  
[fibershedmarketplace.com](http://fibershedmarketplace.com)

*Stores:*

Warner Mountain Weavers in Cedarville, CA

## **CONTACT**

*Email:* [lani@lanislana.com](mailto:lani@lanislana.com) or [estillranch@att.net](mailto:estillranch@att.net)

*Phone:* 775-333-0882 or 775-722-8173



## Lani Estill

Estill Ranches, LLC & Lani's Lana  
Eagleville, CA

### SAMPLES

1. Superfine natural white Rambouillet sport weight yarn, milled at Mountain Meadow Wool Mill (Buffalo, WY)
2. Natural gray Rambouillet DK weight yarn, milled at Mountain Meadow Wool Mill (Buffalo, WY)
3. Natural black Rambouillet DK weight yarn, milled at Mountain Meadow Wool Mill (Buffalo, WY)
4. Fine black Rambouillet combed top, 70% wool and 30% alpaca
5. Superfine natural white Rambouillet fingering weight yarn, milled at Mountain Meadow Wool Mill (Buffalo, WY)
6. Rambouillet wool (washed)

### CONTACT

*Email:* lani@lanislana.com or estillranch@att.net

*Phone:* 775-333-0882 or 775-722-8173



1.



2.



3.



4.



5.



6.





**Leslie Adkins**  
Heart Felt Fiber Farm  
Santa Rosa, CA

Heartfelt Fiber Farm is a mini eco farm in West Sonoma County with a small spinning herd producing diverse luxury fibers for spinners, knitters, felters and weavers as well as finished natural fiber products. Their spinning herd includes Icelandic, Shetland, and Ouessant sheep, Angora/La Mancha goats, Suri Alpaca, and Llama, and produces fibers in 11 natural colors. Leslie is passionate about Heartfelt Fiber Farm's primitive sheep species, meaning that they are hearty and adaptable, and they produce a beautiful, highly spinnable fiber. Leslie's background in environmental science drives Heartfelt Fiber Farm to minimize its environmental footprint, and to be a "no-kill" farm: animals are not produced for the meat market., but rather the farm production is based on "continuous harvest" which involves sustainably and humanely harvesting fibers throughout the natural life of the animal. Heartfelt Fiber Farm animals live in a healthy "forever" home and are only bred if the offspring can stay at the farm or go to another farm with a similar philosophy.

**PRODUCTS**

*Yarn:* Unique handspun and mill-spun blends

*Fiber:* Custom batches of roving

*Other:* Handmade knitted and felted housewares and wearables from roving and yarn, available year round

New lots of fiber are produced in both spring and fall as many of the herd are sheared twice yearly. Raw fleeces are sold occasionally; please inquire to request on-demand custom woolly products.

**MICRON DATA:**

*Icelandic:* 33.9 (2014 test)

*Ouessant (black):* 29.7 (2014 test)

*Icelandic purebreds:* 30.5 and 52.3 (2013 test)

*Fiber goats (50% Angora, 50% LaMancha):* 18.2 and 23.4 (2013 test)

**SALES**

*Online:* [heartfeltfiberfarm.com](http://heartfeltfiberfarm.com), [fibershedmarketplace.com](http://fibershedmarketplace.com)

*Markets and fairs:* Please check website.

**CONTACT**

*Email:* [info@heartfeltfiberfarm.com](mailto:info@heartfeltfiberfarm.com)

*Phone:* 707-585-2841

*Website:* [heartfeltfiberfarm.com](http://heartfeltfiberfarm.com)



*Photos by Alycia Lang*

## **Leslie Adkins**

Heart Felt Fiber Farm

Santa Rosa, CA

### **SAMPLES**

1. Special blend of Ouessant, Icelandic, Shetland, Suri alpaca, Cashgora and mohair, hand spun by Leslie Adkins
2. Ouessant wool (washed)
3. Icelandic wool (washed)
4. Suri alpaca

### **CONTACT**

*Email:* [info@heartfeltfiberfarm.com](mailto:info@heartfeltfiberfarm.com)

*Phone:* 707-585-2841

*Website:* [heartfeltfiberfarm.com](http://heartfeltfiberfarm.com)



1.



2.



3.



4.





*Photos courtesy of Blue Oak Canyon Ranch*

## **Lynn & Jim Moody**

### **Blue Oak Canyon Ranch**

### **San Miguel, CA**

Blue Oak Canyon Ranch is a beautiful ranch ten miles north of San Miguel, along the inland Coast Ranges, managed by Jim Moody, a retired clockmaker, and Lynn Moody, a mostly-retired college professor who taught (and conducted research in) soil science, geology, and earth science. Blue Oak Canyon Ranch raises Santa Cruz Island sheep, the rarest breed of sheep in the United States, and a “Critical” designated breed as listed by the Livestock Conservancy. Named for an island off the California coast, their earliest ancestors arrived on Santa Cruz Island in 1850 and the breed is nearly indigenous to California and well suited to drought tolerant landscapes. When considering sheep, Lynn and Jim Moody figured they might as well get sheep that need to be preserved – an endangered breed, in other words. They started with Navajo-Churro sheep, and in 2010 acquired a starter flock of nine sheep of the even rarer Santa Cruz Island sheep. Blue Oak Canyon Ranch now hosts a flock of Santa Cruz Island Sheep and works on improving wool quality through management and breeding, while still preserving the unique qualities of these sheep.

## **PRODUCTS**

*Fiber:* Santa Cruz Island raw fleeces; Navajo Churro roving; Llama roving. Fiber is stored in a good facility and available year round.

## **MICRON DATA**

*Santa Cruz Island ewe:* 26.2 (2016 test)

## **SALES**

*Online:* [etsy.com/shop/blueoakcanyonranch](https://etsy.com/shop/blueoakcanyonranch)  
and [albcusa.org/classifiedsection/](https://albcusa.org/classifiedsection/)

## **CONTACT**

*Email:* [lynn@blueoakcanyonranch.com](mailto:lynn@blueoakcanyonranch.com)

*Website:* [blueoakcanyonranch.com](https://blueoakcanyonranch.com)

## **SAMPLES**

1. Santa Cruz Island yarn, hand spun by Lynn Moody
2. Santa Cruz Island wool (washed)



1.



2.





## **Marcia Barinaga**

Barinaga Ranch  
Marshall, CA

At Barinaga Ranch, Marcia Barinaga and her husband, Corey Goodman, are continuing the ancient shepherding and cheese-making traditions of her Basque family and ancestors. Their very friendly flock of East Friesian dairy sheep graze year round on over 100 acres of hilly, certified Organic pastures overlooking Tomales Bay in Marin County; Barinaga Ranch is also certified Animal Welfare Approved. The Barinaga family began sheep ranching in this country in the early 1900s, when Marcia's paternal grandfather, Valentin Barinagarrementeria, traveled from the Basque village of Markina to Mountain Home, Idaho, to become a sheepherder. Inspired by this ancestral tradition, Marcia maintains her flock so that she can be involved in all aspects of the operation, like the Basque shepherds who care for their sheep, do the milking, and make the cheese. In addition to producing milk for Basque-style cheese, the East Friesian ewes grow a medium-coarse wool that is praised by spinners and especially good for weaving, felting, or knitting.

### **PRODUCTS**

*Yarn:* 2-ply East Friesian sport weight yarn in brown and white, spun at Creekside Fiber Mill (Lebanon, OR), and gray, and black, spun at Yolo Wool Mill (Woodland, CA)

### **MICRON DATA**

*East Friesian:* 34.1 (2014 test)

### **SALES**

*Email:* [lists@barinagaranch.com](mailto:lists@barinagaranch.com); contact to inquire about current products or a tour of the ranch.

### **CONTACT**

*Email:* [lists@barinagaranch.com](mailto:lists@barinagaranch.com)

*Website:* [barinagaranch.com](http://barinagaranch.com)



*Photos by Paige Green*



**Marcia Barinaga**  
Barinaga Ranch  
Marshall, CA

**SAMPLES**

1. East Friesian yarn – white milled at Creekside Fiber Mill (Lebanon, OR ) and black milled at Yolo Wool Mill (Woodland, CA)
2. East Friesian wool (washed)
3. Machine felted East Friesian wool (white and black)

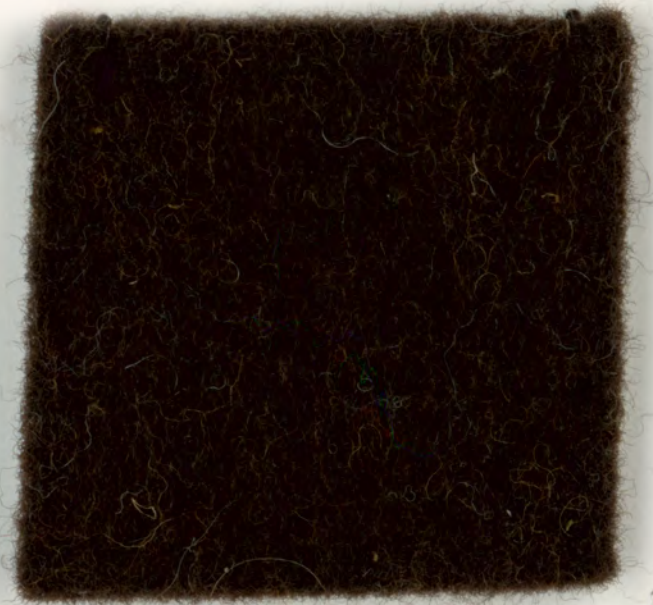
**CONTACT**

*Email:* lists@barinagaranch.com

*Website:* barinagaranch.com



1.



3.



2.







*Photo by Paige Green (top) and Alycia Lang (bottom)*

## **Marie Hoff**

Capella Grazing Project  
Bodega, CA

Capella Grazing Project is an initiative to link land stewardship with local agriculture. We work with vineyards, orchards, farms, and landowners to put the holistic benefits of grazing animals into action. In so doing we are able to preserve and continue a rare, heritage breed of sheep: Ouessant island sheep from l'Isle de Ouessant off the coast of Brittany, France. The project consists of 28 Ouessant sheep, who can be found grazing and nibbling their way through Sonoma County vineyards and rangeland. Ouessant sheep are a primitive breed, very hardy and adaptable: they produce a beautiful, highly spinnable fiber, and are the smallest breed of sheep in the world. Ouessant sheep are of particular interest to California agriculturalists because their adaptable and versatile nature makes them good candidates for vineyard grazing practices. If we can give these Old World sheep a job, we can prevent them from dying out—increasing genetic diversity and strength, while at the same time using their grazing work to reduce reliance on synthetic herbicides, fossil-fuel mowers, and monoculture farming.

## **PRODUCTS**

*Yarn:* Handspun Ouessant yarn

*Fiber:* Raw Ouessant wool

*Other:* Sheep sponsorships

## **MICRON DATA**

*Ouessant black ewe lamb:* 32.3 (2016 test)

*Ouessant black ewe inner coat:* 28.5 (2016 test)

*Ouessant black ewe outer coat:* 42.2 (2016 test)

## **SALES**

Online at [capellagrazing.com](http://capellagrazing.com) or by email.

The best selection of fleece is the day of shearing, in September or March. You can be notified of shearing day by emailing Marie at [capellagrazing@gmail.com](mailto:capellagrazing@gmail.com).

## **CONTACT**

*Email:* [capellagrazing@gmail.com](mailto:capellagrazing@gmail.com)

*Website:* [capellagrazing.com](http://capellagrazing.com)

*Instagram:* @stargrazers



**Marie Hoff**

Capella Grazing Project

Bodega, CA



### **SAMPLES**

Ouessant 2-ply yarn, hand spun by Marie Hoff

These samples are just two of an array of different colors and textures. Ouessant is a primitive fleece that is dual-coated in the adult ewes, with a downy undercoat and strong outer coat.

### **CONTACT**

*Email:* [capellagrazing@gmail.com](mailto:capellagrazing@gmail.com)

*Website:* [capellagrazing.com](http://capellagrazing.com)

*Instagram:* [@stargrazers](https://www.instagram.com/stargrazers)





## Marlie de Swart

### Bo-Rage Yarns & Designs

### Bolinas, CA

Marlie de Swart of Bo-Rage Yarns & Designs is an artist trained in Holland, Paris and Los Angeles, who specializes in hand spun yarns and hand made garments. The yarns are made from local wool, alpaca, mohair or Angora rabbit fur, sourced within 50 miles of her home and studio in Bolinas, California. Marlie believes that combining excellent design with locally sourced materials provide a strong alternative to imports. Marlie also owns and manages a brick and mortar store, Black Mountain Artisans in Point Reyes Station, just north of San Francisco. For 25 years it has been run as a cooperative for local fiber artists who represent the best in their technique, be it spinning, knitting, felting or any other art form where fiber is used. As a knitwear designer and hand spinner, Marlie is an experienced artisan who can provide excellent consultation on combining local materials to produce high quality garments.

## PRODUCTS

*Yarn:* Handspun local wool and alpaca, mill-spun local wool

*Other:* Hand-knit and hand-loomed sweaters, cardigans, vests, hats, and other garments

*Books:* Forthcoming book of patterns specifically designed for local fibers

## SALES

*Store:*

Black Mountain Weavers & Artisans  
11245 Main Street, Point Reyes Station, CA

*Online stores:*

[fibershedmarketplace.com](http://fibershedmarketplace.com)

[borageyarn.com](http://borageyarn.com)

## CONTACT

*Email:* [bma@sonic.net](mailto:bma@sonic.net)

*Phone:* 415-663-9130



*Top: Marlie de Swart, center: part of the flock at Starbuck Station Wools (photos by Paige Green). Bottom: sheep at Windrush Farm (photo by Robin Lynde).*



**Marlie de Swart**  
Bo-Rage Yarns & Designs  
Bolinas, CA

**SAMPLES**

Wool-alpaca blend yarn, milled at Yolo Wool Mill  
(Woodland, CA)

- a. Windrush Farm Corriedale/Finn cross (50%)
- b. Starbuck Station Wensleydale (30%)
- c. Alpacas of Marin Huacaya alpaca (20%)

**CONTACT**

*Email:* bma@sonic.net

*Phone:* 415-663-9130







**Marnie Jackson**  
Black Mountain Farm  
Nicasio, CA

Marnie Jackson fulfills her dream of simple living off the land on the slopes of Black Mountain in West Marin, caring for horses, turkeys, chickens, dogs, cats, Wensleydale sheep and Angora rabbits. Each season, the sheep and rabbits are sheared for their own comfort and care. Marnie cleans and spins this fiber into yarn and plies the two types of fiber together, combining the strength of the wool with the softness and warmth of the Angora. When her daughter wanted to learn to knit this yarn into hats and sell to fundraise for her small town school, Marnie began making hats by hand; the fiber is perfect for warm, soft, fluffy, comforting knitwear. Black Mountain Farm offers farm tours and fiber spinning demonstrations with the picturesque backdrop of the Nicasio Reservoir.

**PRODUCTS**

*Fiber:* German Angora fiber, Wensleydale wool

*Other:* hats made of Wensleydale wool and German Angora fiber; handbags made of Wensleydale wool.

Angora fiber is harvested year round, and the Wensleydale sheep are sheared in the spring, but there is always some wool on hand.

**SALES**

*Store:* Bloom Consignment store in Point Reyes Station

*Farmer's Markets:* Fibershed Marketplace at various Bay Area markets: [Fibershed.org/events](http://Fibershed.org/events)

**CONTACT**

*Facebook:*

<https://www.facebook.com/BlackMountainFarm.Marnie/>

*Phone:* 415-662-1050

*Website:* <http://marniejksn.wix.com/black-mountain-farm>



*Photos by Alycia Lang*

**SAMPLE**

German Angora fiber







*Photos by Paige Green*

## **Mary Pettis-Sarley**

### **Twirl Yarn**

### **Napa, CA**

Mary Pettis-Sarley is the fiber producer and creator of Twirl Yarn. Her educational training in textile and visual design combined with thirty years of ranching experience produces an exceptional line of yarn. She manages a large parcel of land in Napa with 50 goats, 200 sheep, 200 alpaca, 9 llamas, 150 pairs of cattle and 10 guardian dogs. Mary observes these responsibilities in a beautiful expression of ecological awareness: "I don't own the land," she says. "I don't own the animals, they own me! How could I own them?" Rather than mastering the land and animals—as civilization is wont to endeavor—she simply tries to fit herself into the play of the land as deeply and smoothly as possible. Mary constantly experiments to create new fiber blends and additions to the naturally colored and naturally dyed Twirl Yarn rainbow

## **PRODUCTS**

*Yarn:* Twirling Petals, a sport weight alpaca, mohair, and wool blend, spun at Yolo Wool Mill (Woodland, CA). Single ply and 2-ply, spun at Mystic Pines Fiber Processing (Williams, AZ).

## **MICRON DATA**

*2014 tests:*

Alpacas: 16.6, 18.1, 22.1

Angora goats: 21.9, 22.1

CVM lamb: 25.4

CVM sheep: 31.7

BFL ewe: 27.6

## **SALES**

*Online:*

[knitterly.com](http://knitterly.com)

[imagiknit.com](http://imagiknit.com)

[toltyarnandwool.com](http://toltyarnandwool.com)

[fibershedmarketplace.com](http://fibershedmarketplace.com)

*Events:*

Email for current schedule of events

## **CONTACT**

*Email:* [twirlyarn@wildblue.net](mailto:twirlyarn@wildblue.net)

*Website:* [twirlyarn.com](http://twirlyarn.com)



## Mary Pettis-Sarley

Twirl Yarn

Napa, CA

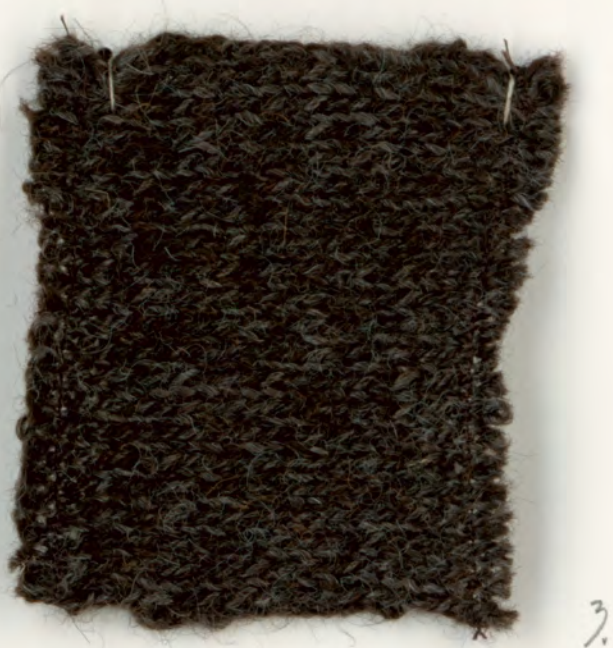
### SAMPLES

1. & 2. Twirling Petals yarn (alpaca, mohair, wool blend), single, milled at Yolo Wool Mill (Woodland, CA)
3. Black 2-ply yarn (80% alpaca/20% shetland blend, plied with wool/alpaca/mohair blend), milled at Mystic Pines Fiber Processing (Williams, AZ)
4. White 2-ply yarn (50% alpaca/50% kid mohair blend, plied with wool/alpaca/mohair blend), milled at Mystic Pines Fiber Processing (Williams, AZ)

### CONTACT

*Email:* [twirlyarn@wildblue.net](mailto:twirlyarn@wildblue.net)

*Website:* [twirlyarn.com](http://twirlyarn.com)







**Maureen Macedo**  
Macedo's Mini Acre  
Turlock, CA

Maureen and Larry Macedo shared a lifelong dream of a ranching lifestyle and are fulfilling that dream at Macedo's Mini Acre in Turlock. Maureen's degree in genetics and Larry's degree in accounting provide a unique dimension to the ranch, which is home to alpacas, llamas, and lionhead rabbits, as well as mini horses. Macedo's Mini Acre sells raw alpaca fiber, handspun yarn, and milled products from a local mini mill, in an array of natural alpaca colors. Macedo's Mini Acre also offers educational programs such as talks or clinics, which can be tailored to your goals and needs.

**PRODUCTS**

*Fiber:* Alpaca fleeces, roving, batts, and yarn. Raw fleeces available at spring shearing

*Other:* Dryer balls, socks, hats, gloves, scarves

**MICRON DATA**

*Huacaya alpaca "Navarro":* 16.2  
(2015 test, sample on following page)

*Huacaya alpaca "Ellie":* 23.7  
(2015 test, sample on following page)

**SALES**

*Online:* [www.etsy.com/shop/macedosminiacre](http://www.etsy.com/shop/macedosminiacre)

*Other:* At our ranch by appointment

**CONTACT**

*Email:* [macedosminiacre@gmail.com](mailto:macedosminiacre@gmail.com)

*Website:* [macedosminiacre.com](http://macedosminiacre.com)



*Photos courtesy of Macedo's Mini Acre*

**Maureen Macedo**  
Macedo's Mini Acre  
Turlock, CA

**SAMPLES**

1. Huacaya alpaca yarn, milled at Mill Creek Fiber Works (Oakhurst, CA)
2. Machine felted Huacaya alpaca fiber
3. Huacaya alpaca fiber "Navarro"
4. Huacaya alpaca fiber "Ellie"

**CONTACT**

*Email:* macedosminiacre@gmail.com

*Website:* macedosminiacre.com







## **Nancy Fleenor Thompson**

Tolenas Mohair Farm

Fairfield, CA

Sustainability and water conservation are a primary focus of the land ethic at Tolenas Mohair Farm. Angora goats graze each day on 2.5 acres of traditional ranch land in Solano County, and their diet is supplemented with grain and hay. Nancy Thompson is a retired forester from USDA Forest Service, and is learning holistic management of her tribe of goats, with advice and mentorship from the Fibershed producer community. Tolenas Mohair Farm began in 2014 when Nancy purchased several goats from Sonrisa Farms: Margurite, who is registered with the Colored Angora Goat Breeders Association; and Francisco and Leonardo, two young wethers. Nancy recently grew her tribe with two rescued dwarf Angora does, Pearl and Lily. Tolenas Mohair Farm adheres to organic agriculture principles to sustain the health of soil, ecosystems, and people, and promote fair relationships and good quality of life for all involved. The tribe's mohair fiber is available in silver, taupe, and white.

### **PRODUCTS**

*Fiber:* raw and washed mohair locks

### **MICRON DATA**

*Angora goat does:* 26.7-28 (2015 tests)

*Angora goat sires:* 30.5 (2015 tests)

### **SALES**

*Farm:* please schedule a visit

### **CONTACT**

*Email:* [nancyfleeny@gmail.com](mailto:nancyfleeny@gmail.com)

*Website:* [tolenasmohairfarm.com](http://tolenasmohairfarm.com)

*Photo by Alycia Lang (top), and photos courtesy of Tolenas Mohair Farm (center and bottom)*





**Nancy Fleenor Thompson**

Tolenas Mohair Farm

Fairfield, CA

**SAMPLES**

1., 2. & 3. 2-ply Mohair yarn, hand spun by Robin Pilatti

4., 5. & 6. Mohair locks (washed)

**CONTACT**

*Email:* [nancyfleeny@gmail.com](mailto:nancyfleeny@gmail.com)

*Website:* [tolenasmohairfarm.com](http://tolenasmohairfarm.com)







*Photos by Alycia Lang*

## **Peggy Agnew** Red Creek Farm Potter Valley, CA

Red Creek Farm is a small family-run sheep farm in Mendocino County specializing in fine hand-spinning fleeces. Tucked away in a corner of Potter Valley, California, the flock of over 30 sheep spends its summers on irrigated clover pasture, winters on grass and alfalfa hay, and springs ranging in the hills. Red Creek Farm raise Merino, Cormo, and Wensleydale/Cormo/Lincoln/Merino-cross sheep, and regularly receive ribbons for fine fleeces at Black Sheep Gathering in Oregon and the California National Wool Show.

### **PRODUCTS**

*Yarn:* Merino-cross yarn in natural colors, natural and acid dyed, spun at Mora Valley Spinning Mill (Mora, NM)

*Fiber:* roving processed at Morro Fleece Works (Morro Bay, CA), hand-carded batts, and raw fleeces from Wensleydale/Cormo/Lincoln/Merino crosses

*Other:* Lambskins and breeding stock.

Shearing is in April and is the best time to purchase fiber.

### **MICRON DATA**

*Lincoln-Merino-Cormo-Wensleydale cross ewe:* 32.5-32.6 (2016 test)

### **SALES**

*Farm:* please schedule a visit

*Online:* [redcrkfarm.com/wool-for-sale](http://redcrkfarm.com/wool-for-sale)

*Events:* Casari Ranch Wool Festival; Retzlaff Winery Spinning Day; Black Sheep Gathering, OR; California Wool and Fiber Festival at the Mendocino County Fair; Lambtown; Fibershed Wool Symposium

### **CONTACT**

*Email:* [agnew.peggy@gmail.com](mailto:agnew.peggy@gmail.com)

*Phone:* 707-743-1295

*Website:* [redcrkfarm.com](http://redcrkfarm.com)



**Peggy Agnew**  
Red Creek Farm  
Potter Valley, CA

#### **SAMPLES**

1. & 2. 2-ply Lincoln-Merino-Wensleydale-Cormo cross yarn, hand spun by Robin Pilatti
3. & 4. Lincoln-Merino-Wensleydale-Cormo cross wool

#### **CONTACT**

*Email:* [agnew.peggy@gmail.com](mailto:agnew.peggy@gmail.com)

*Phone:* 707-743-1295

*Website:* [redcrkfarm.com](http://redcrkfarm.com)







*Photos by Paige Green*

**Robin Lynde**  
**Meridian Jacobs**  
**Vacaville, CA**

Robin Lynde grazes a flock of Jacob's sheep on 10 acres of irrigated pasture in Solano County. Through rotational grazing and a series of carefully designed pasture management techniques her sheep have access to healthy forage and thus they produce high quality colored fleeces. Depending on the proportion of black to white that the sheep produces, the yarns are a blend of the black and white, and they become a varied hue of deep and light toned gray. Robin is a talented artisan and understands yarn quality, she works with mills throughout the state to create yarns that will perform well in our knitting or weaving projects.

**PRODUCTS**

*Yarn:* Jacob yarn, milled at Mill Creek Fiber Works (Oakhurst, CA); coned yarn from other Solano County flocks.

*Fiber:* Jacob wool in the form of raw fleece, carded fiber (sliver or roving).

*Other:* Hand woven fabric, horn buttons, lambskins.

**MICRON DATA**

*Jacob:* 23.2, 30.3, 31.5 (2013 tests)

*Jacob:* 28.2 (2014 test)

**SALES**

*Farm:*

Call 707-688-3493 for an appointment

*Online stores:*

[meridianjacobs.com](http://meridianjacobs.com)

[fibershedmarketplace.com](http://fibershedmarketplace.com)

*Other:*

Finished woven goods at the Artery in Davis

**CONTACT**

*Email:* [robin@meridianjacobs.com](mailto:robin@meridianjacobs.com)

*Phone:* 707-688-3493

*Website:* [meridianjacobs.com](http://meridianjacobs.com)



**Robin Lynde**  
Meridian Jacobs  
Vacaville, CA

**SAMPLES**

1. Jacob yarn, milled at Mill Creek Fiberworks (Oakhurst, CA)
2. & 3. Machine felted Jacob wool (white sample is britch wool, which is generally coarser)
4. & 5. Jacob wool (washed)

**CONTACT**

*Email:* robin@meridianjacobs.com

*Phone:* 707-688-3493

*Website:* meridianjacobs.com







**Sally Fox**  
Viriditas Farm  
Brooks, CA

Sally Fox has 30 years of experience as a scientist breeding naturally colored cotton. Alongside the cotton breeding plots at Viriditas Farm in the Capay Valley, Sally raises a flock of Merino sheep on certified Organic pasture. The 140 sheep graze and add fertility to the soil, contributing to Sally's journey toward biodynamic farming practices. Viriditas Farm produces some of the finest Merino wool in the state, and it is available in natural colors and in the form of roving, or various yarns. Sally's care for the land and animals are evident in her humane, sustainable practices, and the high quality of fibers and food that Viriditas Farm produces.

**PRODUCTS**

*Yarn:* Organic Merino yarn in fingering, sport, worsted, and bulky weights in natural colors

*Fiber:* Organic Merino wool, raw by the pound or by the fleece; pin draft roving in natural colors

**MICRON DATA**

*Merino:* 18.1-24.7 (2013 test range)

**SALES**

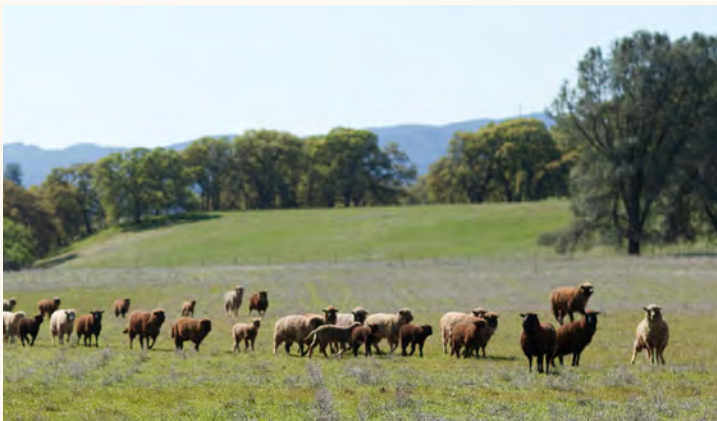
*Website:* [vreseis.com](http://vreseis.com)

*Store:* Pioneer Yarn available at A Verb for Keeping Warm in Oakland, CA

**CONTACT**

*Email:* [sally@vreseis.com](mailto:sally@vreseis.com)

*Website:* [vreseis.com](http://vreseis.com)



*Photos by Paige Green*

**Sally Fox**  
Viriditas Farm  
Brooks, CA

**SAMPLES**

1. Merino 2-ply yarn, hand spun by Amy Corbett
- 2., 3. & 4. Merino roving in natural colors

**CONTACT**

*Email:* [sally@vreseis.com](mailto:sally@vreseis.com)

*Website:* [vreseis.com](http://vreseis.com)







*Photos courtesy of Sheepie Dreams Organics*

## **Sandra Charlton**

Sheepie Dreams Organics  
Santa Cruz, CA

Sheepie Dreams Organics is a small family farm caretaking 5 certified Organic acres in Santa Cruz. Sheepie Dreams Organics has been raising pasture grass for CCOF Wensleydale and Romney sheep who graze peacefully alongside chickens under orchards of heirloom fruit trees pollinated by bee hives for over twenty years. Sheepie Dreams honors age old traditions by using handtools when possible and offering positions to volunteers who wish to gain practical and valuable experiences in the lost tradition of homesteading.

## **PRODUCTS**

*Fiber:* Washed and unwashed fleeces; washed locks; pin drafted roving, processed by Morro Fleece Works (Morro Bay, CA)

## **MICRON DATA**

*Wensleydale cross:* 31.1, 31.4, 35, 38.2, 39.5, 41.2 (2015 test)

## **SALES**

*Farm:* Please schedule a visit

*Online:* [goodeggs.com](http://goodeggs.com)

## **CONTACT**

*Email:* [sheepiedreams@gmail.com](mailto:sheepiedreams@gmail.com)

*Phone (text):* 415-734-1663

*Website:* [sheepiedreamsorganics.com](http://sheepiedreamsorganics.com)

## **SAMPLES**

1. Romney 2-ply yarn, hand spun by Kori Hargreaves
2. Romney fleece (washed)







**Sandy Wallace**  
 Alpacas of Marin  
 Nicasio, CA

Sandy Wallace raises Suri and Huacaya alpacas on a ranch along the main road to Point Reyes National Seashore and nestled into the heart of Marin's historic agricultural land. While working in Southern California, Sandy boarded the alpacas at ranches throughout the West coast, creating strong ties to breeders and farmers throughout the region, and even throughout the country. This offered the advantage of learning different approaches to alpaca husbandry and sales from a spectrum of successful alpaca ranchers. Now settled in Nicasio, Alpacas of Marin breeds and sells both Suri and Huacaya alpacas, sells alpaca fleece, and offers boarding for alpacas.

**PRODUCTS**

*Fiber:* Raw Suri and Huacaya fleeces and yarn (sometimes blended)

*Other:* Breeding stock/fiber animals; alpaca compost (free)

Shearing takes place in April; best selection of fleeces available shortly after. Alpaca fleeces and yarn are very stable for years, so they can be purchased year round.

**MICRON DATA**

*Suri alpaca:* 18-30

*Huacaya alpaca:* 15-29

**SALES**

*Online:* [alpacasofmarin.com](http://alpacasofmarin.com)

*Farm:* Contact for an appointment

Events: Fibershed Wool Symposium; Farmer's Markets (contact for dates and locations)

**CONTACT**

*Email:* [info@alpacasofmarin.com](mailto:info@alpacasofmarin.com)

*Website:* [alpacasofmarin.com](http://alpacasofmarin.com)

*Phone:* 626-818-3148



*Photos courtesy of Alpacas of Marin*



**Sandy Wallace**  
Alpacas of Marin  
Nicasio, CA

**SAMPLES**

1. Huacaya alpaca 2-ply yarn, hand spun by Brenda Flowers
2. Huacaya alpaca fiber
3. Suri alpaca 2-ply yarn, hand spun by Susan Sullivan Maynard
4. Suri alpaca fiber (washed)

**CONTACT**

*Email:* [info@alpacasofmarin.com](mailto:info@alpacasofmarin.com)

*Website:* [alpacasofmarin.com](http://alpacasofmarin.com)

*Phone:* 626-818-3148

1.

3.

2.

4.



*Photos courtesy of Wild Oat Hollow*

## **Sarah Keiser**

### **Wild Oat Hollow**

### **Penngrove, CA**

Wild Oat Hollow is a small hobby farm with Romney sheep, dairy and Angora goats, and chickens. Romney sheep do very well in the lush Penngrove pasture at Wild Oat Hollow, and by limiting the number of sheep, they can stay completely on pasture 75% of the year. In the dry months, their diet is subsidized with hay, but the sheep never receive grain. With this method of animal husbandry the sheep fluctuate with the weather, growing chubby in the lush winter months and the lambs grow quickly on their mother's milk and the green pastures, while in the summer the sheep lose some of their excess weight and lean down. Wild Oat Hollow Romney have beautiful fleece which are a dream for the hand spinner; both novice and experts will enjoy this wonderful long fiber.

## **PRODUCTS**

*Yarn:* Handspun and mill-spun yarn.

*Fiber:* Raw fiber, pin draft roving.

The greatest variety of fiber is available after spring shearing, around April.

## **MICRON DATA**

*Wensleydale ewe:* 29.3 (2016 test)

*Wensleydale ram:* 27.9 (2016 test)

*Romney ewe:* 37.0 (gray) (2016 test)

*Romney ewe:* 34.0 (dark gray) (2016 test)

*Wensleydale-Cormo-Lincoln-Merino cross ewe:* 28.8 (2016 test)

## **SALES**

*View products online:* [wildoathollow.weebly.com](http://wildoathollow.weebly.com) or [facebook.com/wildoathollow](https://facebook.com/wildoathollow)

## **CONTACT**

*Email:* [sarah.keiser@gmail.com](mailto:sarah.keiser@gmail.com)

*Facebook:* [facebook.com/wildoathollow](https://facebook.com/wildoathollow)

*Website:* [wildoathollow.weebly.com](http://wildoathollow.weebly.com)



**Sarah Keiser**  
Wild Oat Hollow  
Penngrove, CA

**SAMPLES**

1. Romney 2-ply yarn, hand spun by Elizabeth Bates
2. Romney wool (washed)

**CONTACT**

*Email:* sarah.keiser@gmail.com

*Facebook:* facebook.com/wildoathollow

*Website:* wildoathollow.weebly.com



1.



2.



## Susan Timm

Timm Ranch  
Vacaville, CA

Timm Ranch lies on the east side of the Vaca Mountains in Solano County, California. Susan Timm's grandfather bought the ranch in the early 1900s and although much of the ranch is leased to a cattle rancher, Susan runs about 85 ewes there. Susan's father started with Targhee sheep and then added Polypay and Rambouillet rams to the flock. Susan's sheep are descendants of this blend of breeds and produce a fine, soft wool.

### PRODUCTS

*Fiber:* Contact the Timm ranch in early April for their shearing schedule, as raw wool is available at the point of shearing. Arranging purchase after the sheep are sheared is the primary method of working with the Timm Ranch wool. The wool is baled at the ranch and can be shipped to any mill or processor you prefer.

Susan's neighbor Robin Lynde has produced a fine weaving yarn with some of the wool from this ranch that can be found online: [www.meridianjacobs.com/shopping/product\\_info.asp?id=552](http://www.meridianjacobs.com/shopping/product_info.asp?id=552)

### MICRON DATA

*Targhee-Polypay-Rambouillet cross ewe:* 21.8 (2015 test)

### CONTACT

*Email:* [ranchtimm@gmail.com](mailto:ranchtimm@gmail.com)

### SAMPLES

1. Targhee-Rambouillet cross wool (washed)
2. 2-ply Targhee-Rambouillet yarn, hand spun by Marie Hoff and Bonnie Reardon



*Photos by Paige Green*

